





Exhib. Ref.	Image	Artist	Object description	Lender / collection Number	Object date	Material/ Technique	Object Size: other info	Rotation	special needs?	Notes	Confirmed	Orientation
		Jozef Bakos	Geraniums	Gift of friends of the Museum, 1940	n.d.	oil on canvas	40 x 30 3/8 in. (101.6 x 77.2 cm)	cinco pintores				
		Jozef Bakos	The Springtime Rainbow	Gift of Jozef G. Bakos in honor of Teresa Bakos, 1974	1923	oil on canvas	Image: 30 x 36 1/4 in. (76.2 x 92.1 cm) Support: 30 x 36 1/4 in. (76.2 x 92.1 cm) Frame: 38 1/4 x 44 1/4 x 2 in. (97.2 x 112.4 x 5.1 cm)	cinco pintores				
		Fremont Ellis	Old Trapper's Cabin- Red River Canyon	Image: 26 x 39 in. (66 x 99.1 cm) Frame: 33 x 46 x 2 in. (83.8 x 116.8 x 5.1 cm)	c.1927	oil on canvas	Image: 26 x 39 in. (66 x 99.1 cm) Frame: 33 x 46 x 2 in. (83.8 x 116.8 x 5.1 cm)	cinco pintores				
		Fremond Ellis	Adios Amigo- Hasta la Vista	Gift of Fremont F. Ellis, 1969	1969	oil on canvas	Support: 25 x 30 in. (63.5 x 76.2 cm) Frame: 32 1/2 x 37 1/2 in. (82.6 x 95.3 cm)	cinco pintores				



Walter Mruk

San Ildefonso Pueblo

Museum acquisition,
before 1940

1928 watercolor

Support: 11 3/4 x 18 in.
(29.8 x 45.7 cm)

cinco pintores

needs matting and framing



Willard Nash

Portrait of Edith Nash

Gift of Mrs. Emma B.
Mosley, 1944

n.d.

oil on canvas

36 1/4 x 24 in. (92.1 x 61
cm)

cinco pintores



Willard Nash

Landscape (Santa Fe)

Gift of Anton V. Long,
1958

1930 oil on canvas

Support: 24 1/4 x 30 1/4 in.
(61.6 x 76.8 cm)
Frame: 26 1/4 x 32 1/4 x 2
in. (66.7 x 81.9 x 5.1 cm)

cinco pintores



Will Shuster

40th Wedding Anniversary

Gift of Catherine Rayne,
1978

n.d.

oil on board

Support: 18 x 21 3/4 in.
(45.7 x 55.2 cm)
Frame: 24 x 27 1/2 in. (61 x
69.9 cm)

cinco pintores



Will Shuster

Portrait of Teresa Bakos

Gift of Helen L. Starbuck, 1989
Frame: 20 1/2 x 16 1/2 x 1 in. (52.1 x 41.9 x 2.5 cm)

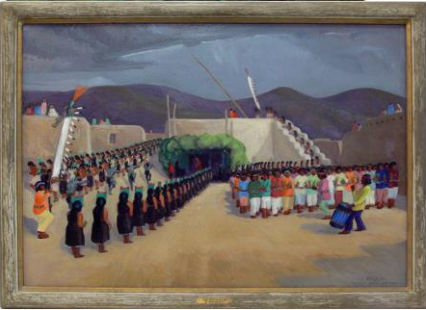
n.d.

oil on canvas

Image: 15 1/2 x 11 1/2 in. (39.4 x 29.2 cm)
Frame: 20 1/2 x 16 1/2 x 1 in. (52.1 x 41.9 x 2.5 cm)

cinco pintores

frame could use some work



Will Shuster

Santo Domingo Corn Dance

Gift of Will Shuster, 1934

1929 oil on canvas

Support: 30 x 40 in. (76.2 x 101.6 cm)
Frame: 35 x 45 x 2 in. (88.9 x 114.3 x 5.1 cm)

cinco pintores



E. Boyd

Untitled (Painting of Birds)

Gift of the E. Boyd Estate, 1975

1925 Oil on board

13 3/4 x 16 1/4 in. (34.9 x 41.3 cm)

rio grande painters

framing needed. Possibly matting



E. Boyd

Fannie Mennen's House

Gift of the E. Boyd Estate, 1975

n.d.

Watercolor on heavy wove paper

21 1/2 x 15 in. (54.6 x 38.1 cm)

rio grande painters

matting and framing needed



Gina Knee Brook

Drum Sound

Bequest of Gina Knee

watercolor on
1935 wove paper

Overall: 22 x 26 in. (55.9 x
66 cm)14-1/12 x 20 image;
22 x 26 mat

rio grande painters

framing needed



Gina Knee Brook

Apache Devil Dance III

Bequest of Gina Knee,
1984

watercolor on
1932 wove paper

Image: 17 x 23 1/2 in. (43.2
x 59.7 cm)

rio grande painters

framing and matting



Paul Lantz

The Accordion Player

Gift of Mrs. Sallie
Wagner

n.d.

oil on canvas

36 x 30 in.36 x 30 in.

rio grande painters



Paul Lantz

Snow in Santa Fe

On long term loan from
the Fine Arts Program,
Public Buildings Service,
U.S. General Services
Administration

circa
1935

oil on masonite

Support: 30 x 48 in. (76.2 x
121.9 cm)
Frame: 35 1/8 x 53 1/8 x 1
3/4 in. (89.2 x 134.9 x 4.4
cm)

rio grande painters



James Stovall Moris

Penitente Procession at Truchas

On long term loan from the Fine Arts Program, Public Buildings Service, U.S. General Services Administration

n.d.

lithograph

Image: 9 5/8 x 18 in. (24.4 x 45.7 cm)
Support: 15 x 21 in. (38.1 x 53.3 cm)

rio grande painters

matting and framing needed



James Stovall Moris

Saturday Night Jug, Santa Fe

On long term loan from the Fine Arts Program, Public Buildings Service, U.S. General Services Administration

n.d.

lithograph

Image: 12 x 15 7/8 in. (30.5 x 40.3 cm)
Support: 15 x 21 in. (38.1 x 53.3 cm)

rio grande painters

needs matting and framing



James Stovall Moris

Corn Huskers

On long term loan from the Fine Arts Program, Public Buildings Service, U.S. General Services Administration

1938 oil on masonite

Image: 17 7/8 x 23 7/8 in. (45.4 x 60.6 cm)
Support: 17 7/8 x 23 7/8 in. (45.4 x 60.6 cm)
Frame: 19 x 24 15/16 x 3/4 in. (48.3 x 63.3 x 1.9 cm)

rio grande painters



James Stovall Moris

Cross of the Martyrs

On long term loan from the Fine Arts Program, Public Buildings Service, U.S. General Services Administration

oil on canvasboard
1940 panel

Support: 19 7/8 x 23 7/8 in. (50.5 x 60.6 cm)

rio grande painters

needs frame



1982.16.18

Cady Wells

Striped Mountian

Gift of the Cady Wells Estate, 1982

n.d.

watercolor on wove paper

Image: 22 1/2 × 15 1/2 in. (57.2 × 39.4 cm)
Support: 22 1/2 × 15 1/2 in. (57.2 × 39.4 cm)
Mat: 28 × 22 in. (71.1 × 55.9 cm)

rio grande painters



Cady Wells

Mesa

Gift of the Cady Wells Estate, 1935

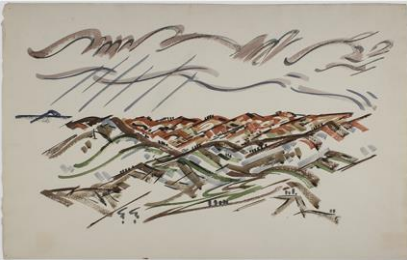
crica
1934-

watercolor

Support: 19 1/2 × 26 1/2 in. (49.5 × 67.3 cm)

rio grande painters

needs matting and framing



Cady Wells

Landscape

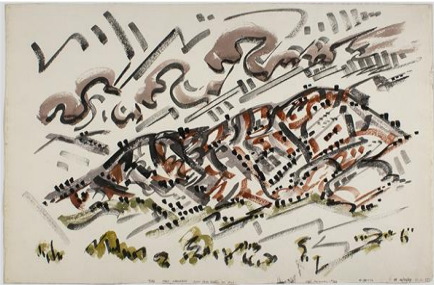
Gift of the Cady Wells Estate, 1982

1933 watercolor

Image: 15 1/2 × 22 1/2 in. (39.4 × 57.2 cm)
Support: 22 × 28 in. (55.9 × 71.1 cm)

rio grande painters

needs matting and framing



Cady Wells

Taso Landscape

Gift of the Cady Wells Estate, 1982

1933 watercolor

Support: 15 1/2 × 22 7/16 in. (39.4 × 57 cm)

rio grande painters

needs matting and framing



Andrew Dasburg

My Gate on the Camino

Gift of Mrs. R.J. Erickson,
1964

1928 oil on panel

Image: 12 3/4 x 16 in. (32.4 x 40.6 cm)
Support: 12 3/4 x 16 in. (32.4 x 40.6 cm)
Frame: 18 x 21 3/16 x 1 7/8 in. (45.7 x 53.8 x 4.8 cm) stieglitz circle



Marsden Hartley

Still Life

Bequest of the Rebecca
Salsbury James Estate,
1968

1922 oil on canvas

Support: 28 x 22 in. (71.1 x 55.9 cm)
Frame: 34 1/2 x 28 1/2 x 1 7/8 in. (87.6 x 72.4 x 4.8 cm) stieglitz circle



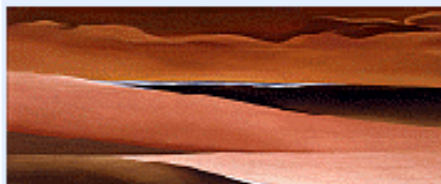
Rebecca S. James

Earth and Water

Bequest of Helen Miller
Jones, 1986

reverse painting
1950 on glass

19 3/4 x 16 in. (50.2 x 40.6 cm) stieglitz circle



Georgia O'Keeffe

Desert Abstraction

Gift of the Museum of
New Mexico Foundation
in honor of the New
Mexico Museum of Art's
Centennial year, 2017

1931 Oil on canvas

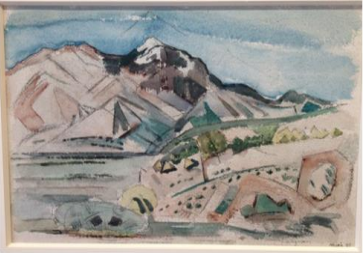
Support: 15 15/16 x 35 13/16 in. (40.5 x 91 cm)
Frame: 16 1/2 x 36 x 1 1/4 in. (41.9 x 91.4 x 3.2 cm) stieglitz circle



Georgia O'Keeffe	Ghost Ranch Pedernal with Red Hill	Bequest of Helen Miller Jones, 1986	1936 oil on linen	Support: 19 3/4 x 29 3/4 in. (50.2 x 75.6 cm) Frame: 21 1/4 x 30 1/8 x 1 3/4 in. (54 x 76.5 x 4.4 cm) Frame (Secondary Display Box): 27 5/16 x 37 3/8 x 3 1/2 in. (69.4 x 94.9 x 8.9 cm)	stieglitz circle
------------------	------------------------------------	-------------------------------------	-------------------	--	------------------



Georgia O'Keeffe	Spring Tree No. 1	Gift of the Georgia O'Keeffe Estate, 1993	1945 oil on canvas	Support: 20 3/8 x 17 1/8 x 7/8 in. (51.8 x 43.5 x 2.2 cm) Frame: 20 3/8 x 18 1/8 x 1 5/8 in. (51.8 x 46 x 4.1 cm)	stieglitz circle
------------------	-------------------	---	--------------------	--	------------------



John Marin	????	Nickoloff collection			stieglitz circle
------------	------	----------------------	--	--	------------------



Rebecca S. James	Mourning Woman in Campos Santos	Harwood Museum	c.1945	reverse painting on glass	stieglitz circle
------------------	---------------------------------	----------------	--------	---------------------------	------------------



Andrew Dasburg Portrait of Joseph Bakos Taos Art Museum c.1925 oil on canvas 16 1/4 x 13 inches stieglitz circle



Joseph Henry Sharp The Stoic

Gift of Joseph Henry Sharp, 1917

1914 oil on canvas

Support: 52 1/2 x 61 1/2 in.
(133.4 x 156.2 cm)
Frame: 62 1/2 x 72 1/2 x 3
1/2 in. (158.8 x 184.2 x 8.9
cm)

Taos Society



E. Irving Couse

Taos Pueblo- Moonlight

Gift of Kibbey W. Couse, 1

1914 oil on canvas

Image: 60 x 60 in. (152.4 x
152.4 cm)
Frame: 69 5/16 x 69 5/8 x 2
1/2 in. (176.1 x 176.8 x 6.4
cm)

Taos Society



E. Irving Couse

The War Bonnet

Gift of Mr. and Mrs. J. B.
McEntire, Jr., 1981

circa 1920 oil on canvas

Support: 24 3/16 x 29 in.
(61.4 x 73.7 cm)
Frame: 33 7/16 x 39 1/2 x 1
3/4 in. (84.9 x 100.3 x 4.4
cm)

Taos Society



Oscar Berninghaus Joe in the Studio Gift of Mrs. O. E. Berningh circa 1925 oil on canvas 36 x 32 in. (91.4 x 81.3 cm) Taos Society



Oscar Berninghaus The Rabbit Hunter Gift of John A. and Margai circa 1945 oil on canvas Support: 34 1/2 x 39 1/2 in. (87.6 x 100.3 cm)
Frame: 40 1/2 x 45 1/4 in. (102.9 x 114.9 cm) Taos Society



Herbert Dunton My Children Gift of a friend, 1927 1920 oil on canvas Image: 50 x 60 in. (127 x 152.4 cm)
Frame: 56 x 65 x 2 in. (142.2 x 165.1 x 5.1 cm) Taos Society



Ernest Blumenschein Dance at Taos Gift of Florence Dibbell Ba 1923 oil on canvas Image: 23 1/2 x 26 1/2 in. (59.7 x 67.3 cm)
Frame: 27 1/2 x 30 1/2 in. (69.9 x 77.5 cm) Taos Society



Bert Geer Phillips

Our Washerwoman's Family-
New Mexico

Gift of Governor and Mrs.

1918 oil on canvas

Image: 40 1/2 × 41 5/8 in.
(102.9 × 105.7 cm)
Frame: 49 7/16 × 51 1/8 × 2
in. (125.6 × 129.9 × 5.1 cm) Taos Society



Julius Rolshoven

The Indian Council

Gift of Harriett B. Rolshov circa 1916 canvas

oil on sized
burlap layed on

Support: 72 x 90 1/2 in.
(182.9 x 229.9 cm)
Frame: 82 x 100 1/2 x 4 1/4
in. (208.3 x 255.3 x 10.8 cm) Taos Society



Julius Rolshoven

Santiago Naranjo (The Sage
of Santa Clara)

Gift of Julius Rolshoven, 1st circa 1917 panel

oil on canvas

24 x 20 in. (61 x 50.8 cm) Taos Society



Victor Higgings

Sleeping Model

Bequest of Joan Higgins R n.d.

oil on canvas

Image: 37 1/2 x 23 in. (95.3
x 58.4 cm) Taos Society



Victor Higgings Flower Panel Gift of the Joan Higgins Re n.d. oil on canvas 56 x 25 in.56 x 25 in. Taos Society



E. Martin Hennings Among the Aspens before 195 oil on canvas Support: 29 1/4 x 29 1/4 in. (74.3 x 74.3 cm) Frame: 36 7/8 x 36 7/8 in. (93.7 x 93.7 cm) Taos Society



E. Martin Hennings The Rendezvous Museum purchase, 1977 n.d. oil on canvas Image: 25 1/4 x 30 1/8 in. (64.1 x 76.5 cm) Frame: 30 1/2 x 35 1/2 x 2 1/2 in. (77.5 x 90.2 x 6.4 cm) Taos Society



Catherine Critcher Hope Pottery Maker Gift of Toy D. and Helen Si circa 1927 oil on canvas Support: 30 x 29 in. (76.2 x 73.7 cm) Frame: 33 3/4 x 33 1/4 in. (85.7 x 84.5 cm) Taos Society



Walter Ufer Across the Arroyo Gift of the Museum of Ne mid 20th c oil on canvas Image: 20 x 25 1/8 in. (50.8 x 63.8 cm) Frame: 24 1/4 x 29 1/2 x 1 3/8 in. (61.6 x 74.9 x 3.5 cm) Taos Society



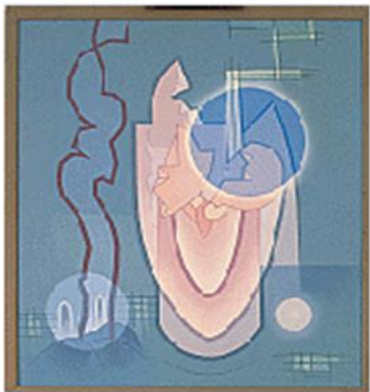
Kenneth Adams

Muchacho

Harwood Museum

c.1930 oil on canvas

Taos Society



Raymond Jonson

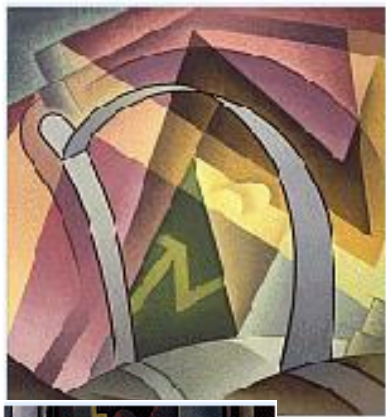
Suspension

Gift of Herbert and Evelyn Weinstein, 1991

1935 oil on canvas

Support: 47 1/2 x 42 in.
(120.7 x 106.7 cm)
Frame: 50 1/2 x 44 3/4 in.
(128.3 x 113.7 cm)

trancendental PG



Raymond Jonson

Variantion on Rhythm N

Gift of Raymond Jonson, 1936

1932 oil on canvas

Image: 37 1/2 x 32 1/2 in.
(95.3 x 82.6 cm)

trancendental PG



Emil Bisttram

Self-Portrait

Gift of Mrs. Emil Bisttram, 1978

1935 oil on canvas

Image: 43 7/16 x 32 1/4 in.
(110.3 x 81.9 cm)

trancendental PG



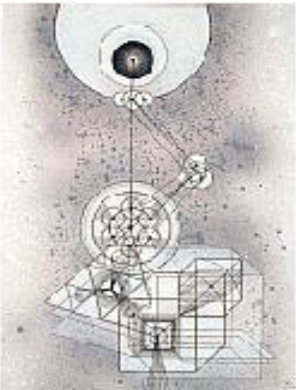
Emil Bisttram

Sunset of the Rio Grande

Gift of Gilbert and Nancy
Waldman, 1994
Frame: 31 3/4 x 36 3/4 x
1 3/4 in. (80.6 x 93.3 x
4.4 cm)

1939 oil on canvas

Image: 25 1/8 x 30 in. (63.8
x 76.2 cm)
Frame: 31 3/4 x 36 3/4 x 1
3/4 in. (80.6 x 93.3 x 4.4 cm) transcendental PG



Emil Bisttram

Projection #1

Gift of Elizabeth and
Duncan Boeckman, 2005

1961 Oil on canvas

44 x 33 x 1 in. (111.8 x 83.8
x 2.5 cm) transcendental PG



Robert Gribbroek

House #1

Gift of Robert Blommer,
2006

lithograph on
1936 paper

Image: 8 3/4 x 11 7/8 in.
(22.2 x 30.2 cm)
Frame: 17 7/8 x 20 7/8 in.
(45.4 x 53 cm) transcendental PG



William Lumpkins

Rio Grande Valley

On long term loan from
the Fine Arts Program,
Public Buildings Service,
U.S. General Services
Administration

circa
1938

watercolor

Image: 15 x 21 in. (38.1 x
53.3 cm) transcendental PG

needs matting and framing



William Lumpkins	An Image Sufficient Unto Itself	Gift of the William and Norma L. Lumpkins Trust, 1989	circa 1947	watercolor on paper	Image: 9 1/2 x 21 1/2 in. (24.1 x 54.6 cm)	trancendental PG	needs matting and framing
William Lumpkins	Koans	Gift of the William Lumpkins Estate, 2007	n.d.	typescript on note cards	Support: 3 x 5 in. (7.6 x 12.7 cm)	trancendental PG	needs pedistal
Agnes Pelton	Awakening	Museum purchase, 2005	1943	oil on canvas	Image: 22 x 28 in. (55.9 x 71.1 cm) Frame: 31 7/8 x 37 15/16 x 1 15/16 in. (81 x 96.4 x 4.9 cm)	trancendental PG	
Florence Miller Pierce	Untitled	Museum purchase with funds from the Boeckman Acquisition Fund, 1997	1943	graphite on paper	Image: 14 1/8 x 10 1/8 in. (35.9 x 25.7 cm) Support: 15 5/8 x 11 5/8 in. (39.7 x 29.5 cm) Mat: 24 x 20 in. (61 x 50.8 cm)	trancendental PG	needs frame



Florence Miller Pierce Untitled

Museum purchase with
funds from the
Collectors' Club, 1998

1952 oil on board

Support: 17 11/16 x 39
15/16 in. (44.9 x 101.4 cm)
Frame: 23 1/4 x 45 1/2 x 1
3/16 in. (59.1 x 115.6 x 3
cm) trancendental PG



Ed Garman No. 283A

Museum purchase, 2007

1942 oil on board

Support: 24 x 24 in. (61 x 61
cm)
Frame: 25 1/4 x 25 1/2 x 1
1/4 in. (64.1 x 64.8 x 3.2 cm) trancendental PG



Stuart Walker Composition No.57

Museum purchase with
additional support from
Frederick Hammersley
and Robert Nurock, 2009

1939 oil on canvas

Image: 40 15/16 x 28 in.
(104 x 71.1 cm)
Frame: 44 3/8 x 31 3/8 x 2
in. (112.7 x 79.7 x 5.1 cm) trancendental PG