

Illustrated Checklist Sorted by Artist

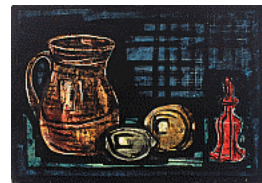
Cady Wells
Confused Memory, n.d.
watercolor
Image: 14 1/2 × 9 1/2 in. (36.8 × 24.1 cm)
Frame: 29 1/2 × 22 3/4 in. (74.9 × 57.8 cm)
Museum acquisition, before 1951
100.23P



Cady Wells
watercolor paintings: Landscape Study - Hill and Cedars
watercolor and gouache on paper
Image: 15 1/16 × 21 9/16 in. (38.3 × 54.8 cm)
Support: 15 1/16 × 21 9/16 in. (38.3 × 54.8 cm)
Gift of the Cady Wells Estate, 1982
1982.16.2



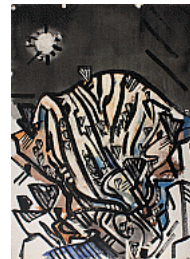
Cady Wells
Still Life - Pitcher, Fruit, Red Bottle #2, 1953
watercolor
Image: 15 3/4 × 22 3/8 in. (40 × 56.8 cm)
Mat: 22 1/8 × 28 in. (56.2 × 71.1 cm)
Gift of the Cady Wells Estate, 1982
1982.16.3
Large yellow pitcher with handle at L of image, green lime next to pitcher, round yellow object. Red, bell shaped bottle at right of image. Black and dark blue background.



Cady Wells
New Mexico Landscape, 1933
watercolor
Image: 15 1/2 × 22 1/4 in. (39.4 × 56.5 cm)
Mat: 22 × 28 in. (55.9 × 71.1 cm)
Gift of the Cady Wells Estate, 1982
1982.16.6
Abstract mountain landscape. Densely painted mountain range in center of image done in black, tan, blue and green. Gentle sloop at L of image. Dark green and black scrolls at bottom of image. Heavy black, tan, blue clouds. White background.



Cady Wells
Mountain with a Moon, circa 1935
watercolor
Support: 30 5/8 × 22 1/4 in. (77.8 × 56.5 cm)
Gift of the Cady Wells Estate, 1982
1982.16.7
Abstract landscape of side of mountain done in bold black bars interspersed with blues, yellow, brown, green and beige colors. Black sky with white moon at upper left corner.



Illustrated Checklist Sorted by Artist

Cady Wells

New Mexico Landscape, 1933

watercolor

Image: 15 × 21 13/16 in. (38.1 × 55.4 cm)

Mat: 21 × 27 in. (53.3 × 68.6 cm)

Gift of the Cady Wells Estate, 1982

1982.16.9

Abstract landscape. Loosely painted mountain landscape in dark blue, black, brown and green. Brown/black swirl lines for clouds with patches of blue. All on white background.



Cady Wells

Blue Whirlpool Study, n.d.

watercolor

Image: 16 5/8 × 22 5/8 in. (42.2 × 57.5 cm)

Support: 18 × 24 1/8 in. (45.7 × 61.3 cm)

Mat: 22 × 28 in. (55.9 × 71.1 cm)

Gift of the Cady Wells Estate, 1982

1982.16.15

Blue, white, black swirls on dark blue background. Black and white broad band through center of image with white squares within band.



Cady Wells

watercolor paintings: Portrait of E #1, n.d.

watercolor

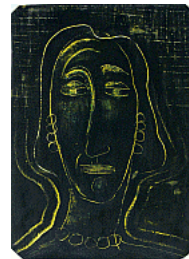
Image: 29 3/8 × 20 5/8 in. (74.6 × 52.4 cm)

Support: 29 3/8 × 20 5/8 in. (74.6 × 52.4 cm)

Gift of the Cady Wells Estate, 1982

1982.16.21

Abstract head and shoulder portrait of woman facing viewer on black background. Long oval head outlined in yellow, three hoops for earrings, round circles for necklace. Upper third of image has yellow checker board pattern in background.



Cady Wells

watercolor paintings: Santo No. 1, circa 1948

gouache impasto on paperboard

Image: 29 1/2 × 20 1/2 in. (74.9 × 52.1 cm)

Support: 29 1/2 × 20 1/2 in. (74.9 × 52.1 cm)

Gift of the Cady Wells Estate, 1982

1982.16.22

Abstract head and shoulder portrait of male figure facing viewer with multi colored checkered background. He has long facie with long white nose, sad eyes. He wears pointed crown-like object on head



Illustrated Checklist Sorted by Artist

Cady Wells

watercolor paintings: Tree Trunk (Bleak Tree), n.d.

watercolor on paperboard

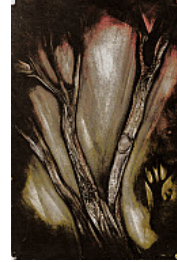
Image: 22 1/4 x 15 in. (56.5 x 38.1 cm)

Support: 22 1/4 x 15 in. (56.5 x 38.1 cm)

Gift of the Cady Wells Estate, 1982

1982.16.25

Slightly abstracted view of a tree bare of leaves; browns and blacks with highlights in red.

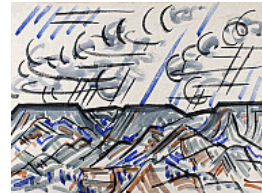


Illustrated Checklist Sorted by Artist

Cady Wells
Buchman Mesa - Otowi, circa 1935
watercolor
15 1/4 × 22 in. (38.7 × 55.9 cm)
Gift of the Cady Wells Estate, 1982
1982.16.28



Cady Wells
Dark Mesas, 1933
watercolor
Support: 15 3/8 × 22 5/8 in. (39.1 × 57.5 cm)
Gift of the Cady Wells Estate, 1982
1982.16.30a
Double-sided watercolor on paper. The recto image features three prominent mesas in deep gray. There are loosed black, blue and gray clouds in the sky.



Cady Wells
Tree/Lane, 1933
watercolor
Image: 22 1/2 × 15 1/2 in. (57.2 × 39.4 cm)
Mat: 34 1/8 × 26 1/8 in. (86.7 × 66.4 cm)
Gift of the Cady Wells Estate, 1982
1982.16.33a
Double-sided: Abstract landscape. Tree with brown trunk and green leaves at R of image, 2 trees at L w/green leave making an arch into center of image. Yellow, tan w/black track-like path through mid-ground of image. Blue splashes for sky.



Cady Wells
Barranca (New Mexico Landscape), circa 1934
watercolor
Support: 15 × 22 in. (38.1 × 55.9 cm)
Gift of the Cady Wells Estate, 1982
1982.16.35a
Close-up of the base and sides of a mesa dotted with pinons done in brown tones interspersed with light blue markings.

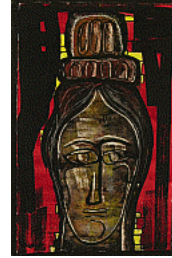


Cady Wells
watercolor paintings: Head of Santo, circa 1939
oil and watercolor on paper
Image: 22 1/2 × 15 1/4 in. (57.2 × 38.7 cm)
Support: 22 1/2 × 15 1/4 in. (57.2 × 38.7 cm)
Frame: 26 3/4 × 19 × 2 1/2 in. (67.9 × 48.3 × 6.4 cm)
Gift of the Cady Wells Estate, 1982
1982.16.40
Dark browns, blacks and reds create the portrait of a man with beard and mustache; head is tilted to the proper right side; blood trickles down the forehead and cheeks.



Illustrated Checklist Sorted by Artist

Cady Wells
watercolor paintings: Santo Portrait Study #2 (San Ildefonso),
circa 1953
ink and watercolor on paper
Image: 21 3/8 x 14 1/4 in. (54.3 x 36.2 cm)
Support: 21 3/8 x 14 1/4 in. (54.3 x 36.2 cm)
Gift of Nathaniel O. and Page Allen Owings, 1998
1998.21.2
Portrait of a santo with a wooden crown red, black and
yellow background.



Cady Wells
Mountains, 1933
watercolor
Image: 15 1/2 x 22 1/8 in. (39.4 x 56.2 cm)
Mat: 22 x 28 in. (55.9 x 71.1 cm)
Bequest of the Rebecca Salsbury James Estate, 1968
2296.23P
Abstract landscape. Tan, black, brown, mustard mountain
range progressing in height from left to right. Brush at
BRC, wispy gray and black clouds all on white
background.



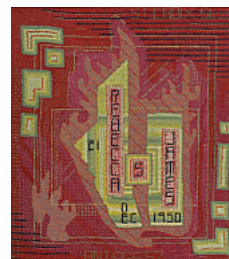
Cady Wells
watercolor paintings: Secluded Chapel, circa 1939
watercolor
Image: 15 13/16 x 22 7/16 in. (40.2 x 57 cm)
Support: 15 13/16 x 22 7/16 in. (40.2 x 57 cm)
Mat: 22 x 28 in. (55.9 x 71.1 cm)
Bequest of the Rebecca Salsbury James Estate, 1968
2297.23P
Night scene. Chapel nestled in the woods. Rear view of
chapel with white cross, trees surrounding chapel. Gray,
green and blue forest



Cady Wells
watercolor paintings: Metamorphic (Black Portrait), n.d.
watercolor and ink on paper
Image: 5 3/4 x 3 15/16 in. (14.6 x 10 cm)
Support: 5 3/4 x 3 15/16 in. (14.6 x 10 cm)
Gift of the E. Boyd Estate, 1975
3271.23P



Cady Wells
Rebecca S James, December 1950
yarn on linen
15 3/4 x 14 in. (40 x 35.6 cm)
Gift of the E. Boyd Estate, 1975
3308.23P
Petit point in green and reddish pink with lettering
throughout, stripes at the upper right and abstract
geometric forms.



Illustrated Checklist Sorted by Artist

Cady Wells

watercolor paintings: Untitled (New Mexico Landscape), 1934

watercolor on paper

Image: 21 1/4 x 28 1/4 in. (54 x 71.8 cm)

Support: 21 1/4 x 28 1/4 in. (54 x 71.8 cm)

Mat: 26 x 34 in. (66 x 86.4 cm)

Bequest of E. Boyd, 1976

3504.23P

Cubistic New Mexico landscape; adobe structure in foreground with windows, doors and ladders. Brown mountain range in background.



Cady Wells

watercolor paintings (visual works): Untitled, circa 1935

watercolor

Image: 11 x 14 1/2 in. (27.9 x 36.8 cm)

Support: 11 1/2 x 15 3/4 in. (29.2 x 40 cm)

Bequest of Vivian Sloan Fiske, 1978

4119.23P

Abstract, mountain landscape, valley and houses.

