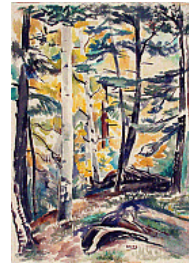


Illustrated Checklist Sorted by Artist

Frank G. Applegate
Hopi Snake Dance, before 1931
oil on canvas
24 x 27 in. (61 x 68.6 cm)
Gift of Frank G. Applegate, 1931
325.23P
Native American ceremonial dance, pueblo in
background, dark sky.



Jozef G. Bakos
Aspens in New Mexico, n.d.
watercolor on paper
Image: 13 x 20 in. (33 x 50.8 cm)
Frame: 20 x 28 x 1 in. (50.8 x 71.1 x 2.5 cm)
Gift of the Estate of Helen L. Starbuck, 1994
1994.26.10
Large aspen tree with yellow leaves. Small garden fence
behind tree. Building at base of mountain. Mountain in
background. Blue sky.



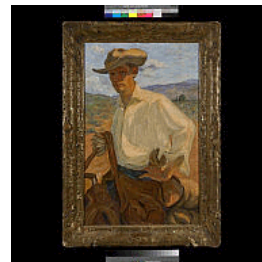
Henry C. Balink
Pueblo Pottery, 1917
oil on canvas
Image: 26 1/4 x 32 1/8 in. (66.7 x 81.6 cm)
Frame: 37 5/8 x 43 5/8 x 3/4 in. (95.6 x 110.8 x 1.9 cm)
Gift of Herman C. and Bina L. Ilfeld, 1977
2991.23P
Native American in blue robe at right, holds black pot,
patterned blanket at left b.g., two other pots at left



Gustave Baumann
oil paintings: Ghost Ranch, 1940
oil on panel
Support: 34 7/8 x 35 in. (88.6 x 88.9 cm)
Frame: 38 1/4 x 38 1/8 x 1 5/8 in. (97.2 x 96.8 x 4.1 cm)
Gift of Ann Baumann, 2005
2005.3.1
Landscape with green mountains in the background and
bare tree in the foreground to right of painting; tree has
missing branches which are ghosted in with a translucent
white pigment; to left of painting near the foothills of the
mountains is an adobe house with lights glowing from the
windows. Under the tree is a coyote; dark blue sky.



Donald Beauregard
Portrait of the Artist, circa 1910
oil on canvas
Image: 32 x 20 in. (81.3 x 50.8 cm)
Frame: 39 1/8 x 26 15/16 x 2 5/8 in. (99.4 x 68.4 x 6.7 cm)
Gift of the Honorable Frank Springer, 1925
1002.23P
Portrait of artist riding a horse holding reins in his proper
right hand, wearing blue jeans and chaps, yellow shirt,
cowboy hat, landscape in background, blue, cloudy skies.



Illustrated Checklist Sorted by Artist

Ernest L. Blumenschein

Untitled, n.d.

oil on canvas

14 x 18 in. (35.6 x 45.7 cm)

Gift of Helen Greene Blumenschein, 1964

1624.23P

Panoramic landscape, valley and mountains; ochre, blue, browns; horses in foreground.



E. Boyd

watercolor paintings: Church at Laguna, New Mexico, n.d.

watercolor

Image: 10 x 12 3/4 in. (25.4 x 32.4 cm)

Support: 11 x 14 in. (27.9 x 35.6 cm)

Mat: 16 x 20 in. (40.6 x 50.8 cm)

On long term loan from the Fine Arts Program, Public Buildings Service, U.S. General Services Administration
1770.23P

Painting of alter piece from the church at Laguna Pueblo, New Mexico. Colorful image of figures representing the trinity in the pediment at top with 3 figures in panels across bottom. Center figure at bottom holds a child in one arm.



Gina Knee Brook

Zuni Jewelry Counter, n.d.

watercolor on paper

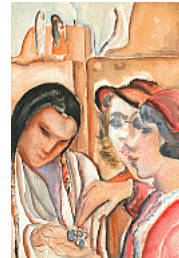
Image: 19 3/4 x 13 1/2 in. (50.2 x 34.3 cm)

Mat: 24 1/4 x 17 1/2 in. (61.6 x 44.5 cm)

Bequest of Gina Knee, 1984

1984.274.20

Two anglo women buying Indian jewelry.



T. C. Cannon

oil paintings: Self with Star of David, circa 1975

oil on canvas

Support: 22 x 20 in. (55.9 x 50.8 cm)

Museum purchase with support from Bob Nurock and a gift from the Samuel and Ethel Ballen Estate, 2008
2008.17

Self portrait of T.C. Cannon; Native American man's head and shoulders in lower right corner of painting wearing glasses and a blue shirt; white speckled background



Illustrated Checklist Sorted by Artist

Eraldo Carugati

La Conquistadora, 1955

oil on Masonite

Image: 14 x 10 1/2 in. (35.6 x 26.7 cm)

Frame: 16 1/2 x 13 1/2 x 1 3/4 in. (41.9 x 34.3 x 4.4 cm)

Gift of Shirley Teutsch Guthmann and Monica Guthmann,
1968

2315.23P

Image of the La Conquistadora wearing a white dress with gold and pink floral designs, she also wears a blue cape with white floral designs and a white lace veil with a crown decorated with red beads and a cross on top, La Conquistadora hold a red rosary in her hands and is standing on a gold pedestal.



Illustrated Checklist Sorted by Artist

Gerald Cassidy

oil paintings: Cui Bono?, circa 1911

oil on canvas

Image: 93 1/2 x 48 in. (237.5 x 121.9 cm)

Frame: 104 1/4 x 57 1/2 x 3 3/4 in. (264.8 x 146.1 x 9.5 cm)

Gift of Gerald Cassidy, 1915

282.23P

Full-length portrait of Native American male leaning against a wall, wearing white robe with head covered; Taos Pueblo in background.



Gerald Cassidy

Spanish Dance Scene (Mural for the Santa Fe Country Club), 1920

oil on canvas

59 x 95 in. (149.9 x 241.3 cm)

Gift of Colonel Norman J. and Gwendolyn E. Riebe, 1977

3643.23P



Steve Catron

Artist in Studio, 1981

oil on canvas

12 x 8 in. (30.5 x 20.3 cm)

Gift of Lew and Lynn Pollock, 1990

1990.62.5

Artist in blue shirt painting a nude, model is in background.



Manville Chapman

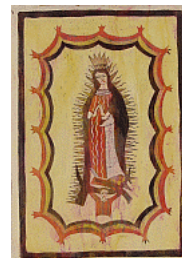
prints: Our Lady of Guadalupe, 1938

block print and gouache on paper

Support: 17 1/2 x 12 1/2 in. (44.5 x 31.8 cm)

On long term loan from the Fine Arts Program, Public Buildings Service, U.S. General Services Administration
737.23G

Retablo image of Our Lady of Guadalupe with Juan Diego at her feet, scallop design around figure with a light background.



Russell Cheney

New Mexico, 1929

oil on canvas

Image: 39 1/2 x 39 1/2 in. (100.3 x 100.3 cm)

Frame: 45 5/8 x 45 5/8 x 1 7/8 in. (115.9 x 115.9 x 4.8 cm)

Gift of Russell Cheney, 1942

1181.23P

Bulto of San Francisco in blue robe, tonsure hair style. Ax on wooden table to right of image, vase with flowers to left with white cross behind it; church and village in center background, mountains and cloudy skies.



Illustrated Checklist Sorted by Artist

Helen Cordero

ceramic ware (visual works): Male Storyteller, circa 1980

Polychrome painted ceramic

9 × 7 7/8 × 8 1/8 in. (22.9 × 20 × 20.6 cm)

Gift of Bud and Barbara Hoover, 2006

2006.31

Hand-built, polychrome hand painted seated male figure with seven children attached to arms, shoulder and lap; figure wears red ruffled shirt, black pants, traditional moccasins and a cross necklace, mouth is open as if speaking or singing.



Andrew Dasburg

watercolor paintings (visual works): Sangre de Cristo, circa

1933

watercolor on paper

Image: 15 × 21 9/16 in. (38.1 × 54.8 cm)

Support: 15 × 21 9/16 in. (38.1 × 54.8 cm)

Mat: 22 × 28 in. (55.9 × 71.1 cm)

Gift of Mr. Edwin F. Gamble, 1968

2235.23P

Abstract landscape. Brown, tan, light green and cream colors in rolling lines with mountain range in background.



Maurice Dixon

shrines: Untitled (Shrine), 2003

tin, paper and glass

32 x 20 x 10 in. (81.3 x 50.8 x 25.4 cm)

2004.12.5a: 7 3/4 x 6 x 2 1/2 in. (19.7 x 15.2 x 6.4 cm)

2004.12.5b: 6 1/2 x 4 1/2 x 1 1/2 in. (16.5 x 11.4 x 3.8 cm)

2004.12.5c: 6 1/2 x 4 1/2 x 1 1/2 in. (16.5 x 11.4 x 3.8 cm)

2004.12.5d: 31 x 18 x 4 in. (78.7 x 45.7 x 10.2 cm)

Gift of Steve and Dottie Diamant, 2004

2004.12.5a-d

2004.12.5a; Tin wall sconce with scallop design at top. Tin is stamped with a floral design along edges and at center is a white background framed by tin spirals with red devils holding pitchforks with the wording (Underworld).

2004.12.5b-c; Tin wall sconce with scallop design at top. Tin is stamped with a floral design along edges and at center is a gold background with menorah and tin horizontal spiral at bottom.

2004.12.5d; Tin cross with floral and punched design on. Red and green wavy pattern paper giving the illusion of reverse painted glass in center of cross. Three icons at base of the Virgin Mary, Angels and Christ on gold background.



Illustrated Checklist Sorted by Artist

Eddie Dominguez
assemblages (sculpture): New Mexico Landscape, 1990
ceramic, wood, paint, copper, tin, paper and Plexiglas
31 x 45 x 3 1/2 in. (78.7 x 114.3 x 8.9 cm)
Gift of the Carlos McClendon Estate, 2009
2009.30.2

shadow box with broken ceramic pieces decorating the frame; inside box shows a three-dimensional landscape of New Mexico; Katchina figures and bird along right edge.



W. Herbert Dunton
Illustration - Scene of Cowboy Life (Rodeo), 1914
oil on canvas
Support: 29 5/16 x 19 1/8 in. (74.5 x 48.6 cm)
Frame: 32 1/4 x 22 1/4 x 1 1/2 in. (81.9 x 56.5 x 3.8 cm)
Gift of Mr. and Mrs. D.J. Oden, 1953
1.23P

Black and white image of a of cowboy life style in a rodeo. Man riding bucking horse holding hat in his proper right hand, he wears chaps and vest with handkerchief. Other figures on horseback in the background.



Fremont F. Ellis
Small Corral Near Cerrillos, 1980
oil on canvas
11 x 14 in. (27.9 x 35.6 cm)
Gift of Mr. Robert J. and Evelyn S. McAleece, 1990
1990.57.1
path leading to mountains, pastel colors

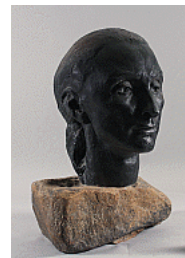


Laura Gilpin
Georgia O'Keeffe's Studio, Abiquiu, 1965
gelatin silver print
Image: 7 1/2 x 9 1/2 in. (19.1 x 24.1 cm)
Support: 8 x 10 in. (20.3 x 25.4 cm)
Mat: 14 x 18 in. (35.6 x 45.7 cm)
Gift of Margaret Schoonover, 1986
1986.227.1

View out a window, tubes of paint, brushes, odds and ends on a table in front of the windows. View of fields and mountains outside of window; rocks and small animal skulls on window ledge.



Una Hanbury
bronzes (visual works): Portrait of Georgia O'Keeffe From Life, 1986
bronze on stone base
9 x 7 x 5 in. (22.9 x 17.8 x 12.7 cm)
Gift of anonymous donor, 1989
1989.409.1
Bust bronze portrait of Georgia O'Keeffe.



Illustrated Checklist Sorted by Artist

E. Martin Hennings

Untitled (Riding Through the Sage and Cedar), n.d.

oil on canvas

Image: 20 x 24 3/16 in. (50.8 x 61.4 cm)

Support: 20 x 24 3/16 in. (50.8 x 61.4 cm)

Frame: 23 13/16 x 27 13/16 x 1 3/4 in. (60.5 x 70.6 x 4.4 cm)

Gift of Miriam S. Hurford, 1984

1984.148

2 Indians on horseback on landscape



Victor Higgins

Adobe House and Taos Mountains, n.d.

oil on panel

20 x 24 in.

Museum purchase, 1962

394.23P



Delmas Howe

Apollo, n.d.

lithograph

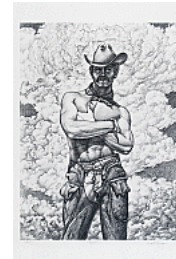
Image: 22 x 16 in. (55.9 x 40.6 cm)

Support: 30 x 22 1/4 in. (76.2 x 56.5 cm)

Gift of Dick and Clara Williamson, 1993

1993.81.1

Male figure standing with arms across chest looking at viewer. He wears a hat and chaps, no shirt neckerchief around throat. Fluffy clouds in background.



Delmas Howe

lithographs: The Three Graces, n.d.

lithograph

Image: 24 x 18 in. (61 x 45.7 cm)

Support: 30 x 22 1/2 in. (76.2 x 57.2 cm)

Gift of Dick and Clara Williamson, 1993

1993.81.2

Three male figures standing in a field with arms embracing each other across one another's shoulders.



Delmas Howe

Trailer Buddies, n.d.

lithograph

Image: 23 x 17 in. (58.4 x 43.2 cm)

Support: 30 x 22 1/4 in. (76.2 x 56.5 cm)

Gift of Dick and Clara Williamson, 1993

1993.81.3

Two male figures hugging one another in front of trailer house, man on left is drinking out of a bottle; both are wearing boots. Mountain prairie in background.



Illustrated Checklist Sorted by Artist

Peter Hurd
paintings (visual works): Portrait of Gerald Marr, 1952/1953
egg tempera on gesso and Masonite
32 1/2 x 38 1/4 in. (82.6 x 97.2 cm)
Gift of Thomas Fortune Ryan III, 1993
1993.38.1
Young man in cowboy hat, purple shirt with orange stripes, mountains in background



Raymond Jonson
oil paintings: Earth Rhythms #2, 1923
oil on canvas
Image: 27 1/2 x 40 5/8 in. (69.9 x 103.2 cm)
Frame: 33 3/4 x 41 3/4 in. (85.7 x 106 cm)
Museum purchase, 2007
2007.5
Landscape with mountains and skyline in blues, pinks and reds



Zena Kavin
sculpture: Mother and Child, 1939
cast plaster and paint
Overall with base: 23 1/2 in. (59.7 cm)
On long term loan from the Fine Arts Program, Public Buildings Service, U.S. General Services Administration 1253.23S
Sculpture of seated woman looking down with hands in lap; small girl standing next to her with head on shoulder and hand on woman's arm.



Gene Kloss
oil paintings: The Old Taos Junction Bridge, circa 1941
oil on canvas
Image: 24 x 25 1/2 in. (61 x 64.8 cm)
Frame: 26 x 28 x 2 in. (66 x 71.1 x 5.1 cm)
On long term loan from the Fine Arts Program, Public Buildings Service, U.S. General Services Administration 2816.23P
Landscape, river runs from lower right corner up to mid center, road running along river at its left side then crosses over an iron bridge on stone pillars. Mountain range in background, blue sky.



Tom Lea
oil paintings: Government Aid to the Needy, circa 1934
oil on Masonite
Support: 36 x 48 in. (91.4 x 121.9 cm)
Frame: 41 x 53 x 1 3/4 in. (104.1 x 134.6 x 4.4 cm)
On long term loan from the Fine Arts Program, Public Buildings Service, U.S. General Services Administration 2836.23P



Illustrated Checklist Sorted by Artist

Russell Lee

Pie Town, 1940 (printed 1990)

gelatin silver print

Image: 12 × 9 in. (30.5 × 22.9 cm)

Support: 14 × 11 in. (35.6 × 27.9 cm)

Mat: 20 × 16 in. (50.8 × 40.6 cm)

New Mexico Farm Security Administration Collection,
Museum purchase with funds from the Pinewood
Foundation with additional support from Barbara Erdman,
1990

1990.70.167

Jigger at a square dance, man clicking his heels together
in air, five women seated on bench in background look
on, two men at left edge, one with cigarette in left hand.
Dresser in corner, flowered wallpaper.



Russell Lee

gelatin silver prints: Pie Town, 1940 (printed 1990)

gelatin silver print

Image: 8 15/16 x 6 9/16 in. (22.7 x 16.7 cm)

Support: 9 15/16 x 7 15/16 in. (25.2 x 20.2 cm)

Mat: 17 x 14 in. (43.2 x 35.6 cm)

Mat (Secondary): 20 x 16 in. (50.8 x 40.6 cm)

New Mexico Farm Security Administration Collection,
Museum purchase with funds from the Pinewood
Foundation with additional support from Barbara Erdman,
1990

1990.70.171

The square dance, two women stepping high holding
arms facing each other, smiling, dresser in corner in
background. Young girl in plaid dress stands at left of
dresser leaning against wall and looking at floor.
Flowered wallpaper.



William Lumpkins

watercolor paintings: Indian Village, 1934

watercolor and pencil on board with plaster

48 x 72 1/2 x 1 in. (121.9 x 184.2 x 2.5 cm)

On long term loan from the Fine Arts Program, Public
Buildings Service, U.S. General Services Administration
2007.6.1

Village scene with kiva along left edge; people and
horses throughout



William Lumpkins

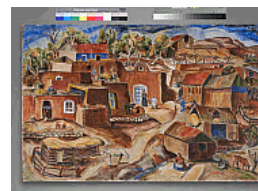
watercolor paintings: Spanish Village, 1934

watercolor and pencil on board with plaster

48 x 72 1/2 x 1 in. (121.9 x 184.2 x 2.5 cm)

On long term loan from the Fine Arts Program, Public
Buildings Service, U.S. General Services Administration
2007.6.2

Village scene with corral along left edge; church in center;
people and horses throughout



Illustrated Checklist Sorted by Artist

William Lumpkins

watercolor paintings: Anglo Village, 1934

watercolor and pencil on board with plaster

48 x 72 1/2 x 1 in. (121.9 x 184.2 x 2.5 cm)

On long term loan from the Fine Arts Program, Public
Buildings Service, U.S. General Services Administration
2007.6.3

Village scene with railroad tracks; tower in center;
people and horses throughout



Illustrated Checklist Sorted by Artist

Maria Martinez
Black on Black Plate, circa 1950
Ceramic
2 x 12 1/2 in. (5.1 x 31.8 cm)
Gift of the Mary Boshen Estate, 2005
2005.36.1

Black on black ceramic plate with image of a serpent around the border, serpent had an exposed tongue with an arrow tip at the end. Four floral designs at the top, bottom and sides of plate.



Maria Martinez
ceramic ware (visual works): No title (Jar), circa 1925
matte-on-black ceramic
5 5/8 x 8 3/8 in. (14.3 x 21.3 cm)
Gift of Lois Shively, 2013
2013.14.1
jar with frieze of feather motifs



Maria Martinez
ceramic ware (visual works): No title (Plate), circa 1925
matte-on-black ceramic
2 3/8 x 13 in. (6 x 33 cm)
Gift of Lois Shively, 2013
2013.14.2
plate with frieze of a feather fan motif



Maria Martinez
ceramic ware (visual works): No title (jar), circa 1935
matte-on-black ceramic
4 5/16 x 6 in. (11 x 15.2 cm)
Gift of Jonathan Abrams and Fay Pfaelzer Abrams, 2013
2013.24.15



Walter Mruk
Santa Fe Landscape, 1938
watercolor on paper
Support: 15 x 20 in. (38.1 x 50.8 cm)
Museum acquisition, before 1940
783.23P
Landscape scene of rolling hills, brown adobe structure in center midground, blue mountain in background, light blue cloud in sky.



Illustrated Checklist Sorted by Artist

Frank H. Myers

Little Napoleon (Bruce Runyon), 1954

oil on canvas board

Support: 31 x 25 in. (78.7 x 63.5 cm)

Frame: 37 1/4 x 31 1/2 x 2 in. (94.6 x 80 x 5.1 cm)

Gift of Patricia Myers, 1997

1997.22.1

Portrait of Bruce Runyon posing as Napoleon wearing a western outfit



Willard Nash

oil paintings: Landscape (Santa Fe), 1930

oil on canvas

Support: 24 1/4 x 30 1/4 in. (61.6 x 76.8 cm)

Frame: 26 1/4 x 32 1/4 x 2 in. (66.7 x 81.9 x 5.1 cm)

Gift of Anton V. Long, 1958

107.23P

Cluster of buildings in lower center of image. A road passes buildings at lower left of image. Tall trees, hills and mountain in background.



John W. Nieto

Maria, n.d.

acrylic on canvas

48 x 60 in. (121.9 x 152.4 cm)

Gift of M. W. and Jean Carpenter, 1982

1982.39.1

Full portrait of Native American woman sitting. She has shoulder length, black hair w/bangs. She wears brown apron, purple & red dress. She holds blue/green pot in lap and a smoothing stone in proper R hand. 2 pots sit beside her a R edge.



Georgia O'Keeffe

oil paintings: Chama River, Ghost Ranch, New Mexico, 1937

oil on canvas

30 1/2 x 16 1/2 in. (77.5 x 41.9 cm)

Frame (Secondary Display Box): 37 9/16 x 24 x 3 11/16 in.

(95.4 x 61 x 9.4 cm)

Gift of the Georgia O'Keeffe Estate, 1987

1987.312.1

Landscape depicting Chama River flowing through valley with hills in background



Virgil Ortiz

sculpture (visual works): Untitled (Opera Singer), 2003

fired indigenous clays and pigments

23 5/8 x 12 5/8 x 9 1/2 in. (60 x 32.1 x 24.1 cm)

Museum purchase with funds from the Herzstein Family

Acquisition Endowment Fund and Bob Nurock with

additional support from Andrea Fisher, 2008

2008.7

Black on tan smiling figure with hands in air and red circle earrings. Black painted tattoos on body.



Illustrated Checklist Sorted by Artist

Sheldon Parsons
Clouds, circa 1942
oil on plywood panel
36 x 36 in. (91.4 x 91.4 cm)
Gift of Sara Parsons Mack, 1948
19.23P

Landscape, dirt road winds from lower right corner of image into hills, mountains in background. Hills and mountains in very bottom of image, blue sky with large billowing clouds make up the greatest portion of image.



Bert Geer Phillips
Taos Mountain Cottonwoods Along the River, circa 1948
oil on plywood
22 1/4 x 28 1/4 in. (56.5 x 71.8 cm)
Gift of Mr. and Mrs. Ralph J. Phillips, Jr., 1984
1984.608.1

Landscape scene. Small, blue river in foreground with grass along its bank. Tall, cluster of yellow cottonwood trees in midground. Tall, blue mountain in background with white clouds above.



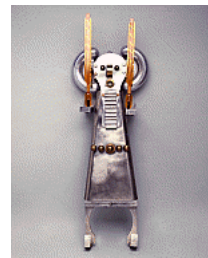
Paul Pletka
acrylic paintings (visual works): El Trono de Gracia (The Throne of Graces), 2013
acrylic on linen
Image: 59 3/4 x 60 in. (151.8 x 152.4 cm)
Frame: 63 x 63 x 2 1/2 in. (160 x 160 x 6.4 cm)
Gift of Paul Pletka and Nancy Benkof in memory of Jean Puddin Clarke, 2013
2013.17

The figure of God as an elderly man with a white beard and dressed in an embellished cloak and hat sits on a throne against a vivid red background.



Tony A. Price
assemblages (sculpture): Hopi Nuclear Maiden, 1987
metal and plastic
34 1/4 x 11 1/4 x 6 3/4 in. (87 x 28.6 x 17.1 cm)
Gift of Mr. and Mrs. Ted Flicker, 1988
1988.148.1

Stylized Hopi maiden in polished stainless steel holding orange plastic rods in each hand representing feathers.



Queaustea
ceramic ware (visual works): Untitled (Waterproofed Acoma Jar), 1900-1905
clay, pigments, and glaze
10 1/4 x 12 in. (26 x 30.5 cm)
Gift of John Wright Schaefer, 2007
2007.31

Acoma ceramic pot which has been re-fired with additional glazing on the interior; black and white geometric design; white has been discolored and darkened due to the re-firing process.



Illustrated Checklist Sorted by Artist

Juan A. Sanchez
devotional art: El Niño Jesús de Praga Retablo, 1936
gouache on wood
Support: 9 1/2 x 6 1/2 in. (24.1 x 16.5 cm)
On long term loan from the Fine Arts Program, Public
Buildings Service, U.S. General Services Administration
2009.17
Image of Jesus as a child dressed in red gown; the right
hand of the child is raised in blessing, while his left hand
holds a sphere surmounted by a cross; yellow
background with black curtains.



Bruce Wilder Saville
bronzes (visual works): Pueblo Indian Deer Dancers, n.d.
bronze
21 1/2 x 38 1/4 x 10 in. (54.6 x 97.2 x 25.4 cm)
On long term loan from the Fine Arts Program, Public
Buildings Service, U.S. General Services Administration
1889.23S
Two Deer Dance figures in full regalia with antlers bent
over with body in profile and heads turned towards
viewer.



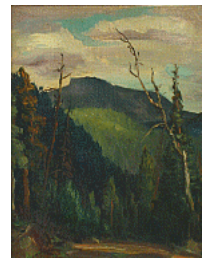
Fritz Scholder
Untitled (Self-Portrait), 1971
oil on canvas
Support: 30 3/16 x 18 1/4 in. (76.7 x 46.4 cm)
Gift of Harvey Mudd, 1983
1983.44
Figure, self portrait.



Fritz Scholder
paintings (visual works): Arts Faculty at the Institute of
American Indian Arts at 4:15pm, 1968
oil on canvas
Support: 54 1/2 x 71 1/2 in. (138.4 x 181.6 cm)
Frame: 60 5/8 x 77 1/8 x 2 1/8 in. (154 x 195.9 x 5.4 cm)
Gift of Fritz Scholder, 1968
2271.23P
Slightly abstract image of the faculty at the Institute of
American Indian Arts against a beige background; one
individual with a question mark on his face at the left edge
of the group



Will Shuster
New Mexico Mountain Scene, 1927
oil on panel
Image: 10 3/4 x 7 1/2 in. (27.3 x 19.1 cm)
Frame: 12 1/2 x 10 1/2 x 1 in. (31.8 x 26.7 x 2.5 cm)
Gift of Robert H. Blommer, 1995
1995.25.1
Landscape mountains with road, trees, cloudy.



Illustrated Checklist Sorted by Artist

John Sloan

Black Pot, 1925

etching

Image: 5 7/8 x 3 15/16 in. (14.9 x 10 cm)

Support: 11 x 7 3/4 in. (27.9 x 19.7 cm)

Mat: 20 x 16 in. (50.8 x 40.6 cm)

Gift of Mary Regensburg Feist, 2000

2000.1.7

Tourist holding a black pot with Native American holding a pot in one hand and a baby in her arms, small child clings to Native woman skirt, man wrapped in a blanket in background, tree and adobe house



Pansy Stockton

Thar's Gold in Them Thar Hills, before 1972

leaves, twigs and grasses on board

Image: 20 x 23 1/2 in. (50.8 x 59.7 cm)

Frame: 26 x 30 x 3 1/2 in. (66 x 76.2 x 8.9 cm)

Gift of Mr. and Mrs. Harold Saueressig, 1965

1849.23P

Collage, mountain landscape.



Todd Webb

gelatin silver prints (photographic prints): Georgia O'Keeffe's

Studio, Ghost Ranch, 1964

gelatin silver print

Support: 10 x 8 in. (25.4 x 20.3 cm)

Mat: 17 x 14 in. (43.2 x 35.6 cm)

Gift of Mr. and Mrs. Todd Webb, 1973

5136.23PH

Interior of studio. Adobe wall and doorway in BG. Easel stands in front of door on which is a large painting. Ladder back chair w/rush seat positioned in front of easel. Cart & low table holds paint box & canister of paint brushes.

