

1960

BIENNIAL
EXHIBITION

FOR

NEW MEXICO

ARTISTS

Foreword

The 1960 Biennial Exhibition for New Mexico Artists is a juried collection of ninety-four paintings and seven sculptures representing one hundred artists from seventeen communities throughout the state. Entry blanks were mailed to approximately 800 New Mexico artists with all media in painting and sculpture eligible. More than 400 entries were received, an increase of some 150 entries over the 1958 Biennial.

Two Purchase Awards and three Awards of Merit were selected by the jury and are reproduced in the catalog. One work by each of the jury members has also been reproduced. The paintings receiving the Purchase Awards will become a part of the Permanent Collection of the Museum of New Mexico Art Gallery.

The jury also selected a group of twenty-eight paintings for a special traveling show to be exhibited nationally.

The 1960 Biennial Exhibition for New Mexico Artists is the second in the series and is presented on alternate years with the Southwestern Artists Biennial Exhibition, which includes work of individuals from four neighboring states.

The Museum of New Mexico Art Gallery is pleased to open the 1960 Biennial Exhibition for New Mexico Artists with the feeling that the jury's choices were made competently and impartially.

Jury

RANDALL DAVEY, N.A., Santa Fe artist

KENNETH R. BARRICK, painter and member of the art faculty of
New Mexico State University

LEZ HAAS, painter and head of the University of New Mexico fine
arts department

Awards

GUSSIE DU JARDIN	"Winter Trees"	First Purchase Prize
NINA HOLLAND	"Chest of Drawers"	Second Purchase Prize
KENNETH M. ADAMS	"White Zinnias"	Award of Merit
ELMER SCHOOLEY	"Winter Fields"	Award of Merit
DORIS STEIDER	"Weathering"	Award of Merit

RANDALL DAVEY
"Young Woman at the Races"
JURY MEMBER



LEZ HAAS
"Sandias at Dusk"
JURY MEMBER





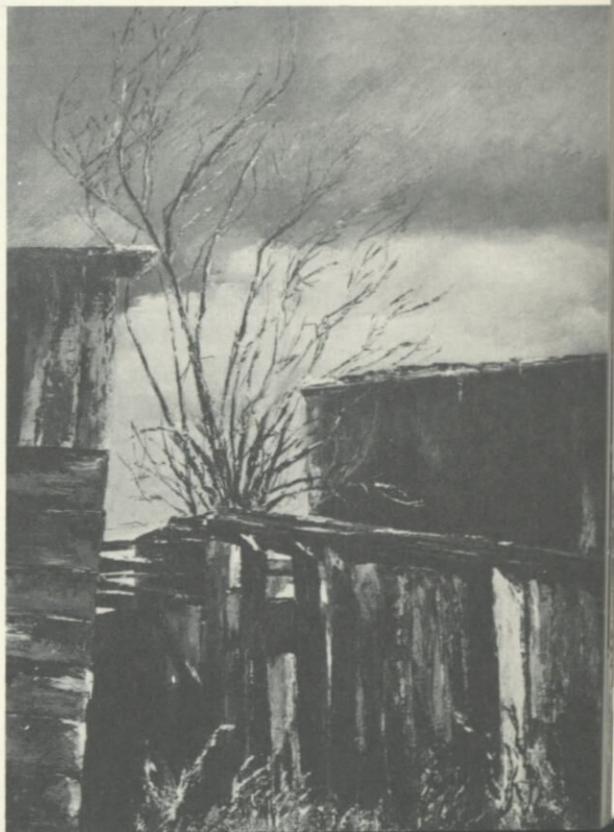
NINA HOLLAND
"Chest of Drawers"
SECOND PURCHASE PRIZE

THOMAS E. HOLLAND
"Still Life with Limes"





GUSSIE DU JARDIN
"Winter Trees"
FIRST PURCHASE PRIZE



DORIS STEIDER
"Weathering"
AWARD OF MERIT



ELMER SCHOOLEY
"Winter Fields"
AWARD OF MERIT

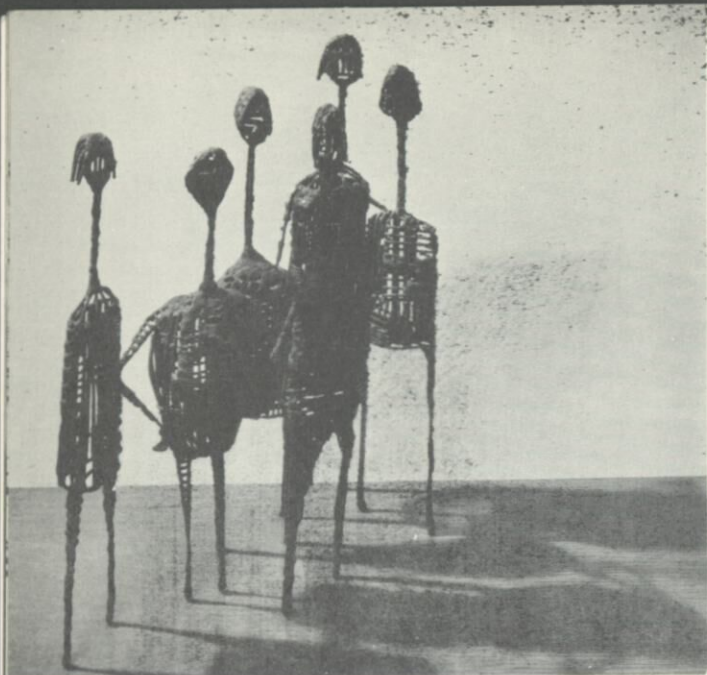
The Catalogue

★ Selected for National Traveling Exhibition

- | | |
|---|-------------|
| RITA DEANIN ABBEY
★ 1. "Taos Mountain"
Oil on Canvas 18 x 40* | Taos |
| KENNETH M. ADAMS
★ 2. "White Zinnias"
Oil on Canvas 30 x 24
AWARD OF MERIT | Albuquerque |
| JEAN ARMSTEAD
3. "Woman in White"
Oil on Canvas 48 x 40 | Albuquerque |
| DEAN AYDELOTT
★ 4. "Dark of the Moon"
Collage 48 x 66 | Albuquerque |
| JOZEF BAKOS
★ 5. "New Mexico"
Water Color 17 x 23 | Santa Fe |
| TERESA BAKOS
6. "Peacock"
Oil and Tempera on Panel 20 x 24 | Santa Fe |

* Measurements in inches.

- | | |
|----------------------------------|-------------|
| KENNETH R. BARRICK | Las Cruces |
| ★ 7. "Crowd" | |
| Acrylic Polymer Emulsion 22 x 45 | |
| JURY MEMBER | |
| STANTON BENJAMIN | Albuquerque |
| 8. Untitled Portrait | |
| Oil on Canvas 20 x 15 | |
| EMIL BISTTRAM | Taos |
| 9. "Composition #17" | |
| Duco on Panel 45 x 40 | |
| DONNA DUDLEY BROWN | Alameda |
| 10. "Little People" | |
| Metal Sculpture 18 | |
| EVELYN G. BYATT | Albuquerque |
| 11. "At the Table" | |
| Oil on Canvas 34 x 30 | |
| DAVID K. CARNAHAN | Santa Fe |
| ★ 12. "Game for Four Children" | |
| Oil on Panel 29 x 48 | |
| BARBARA BEAUDREAU CARTER | Santa Fe |
| 13. "Late Winter Afternoon" | |
| Oil on Panel 20 x 17 | |
| WILLIAM F. CONGER | Albuquerque |
| 14. "Winter Night" | |
| Oil on Canvas 57 x 53 | |
| HOWARD COOK | Taos |
| ★ 15. "Snow Movement" | |
| Oil on Canvas 30 x 66 | |
| PHILIP COOKE | Santa Fe |
| 16. "Moon and Cactus" | |
| Oil on Panel 18 x 14 | |
| LOLA COURTNEY | Hobbs |
| 17. "King Cotton" | |
| Oil on Panel 48 x 22 | |
| ARITA COURVILLE | Albuquerque |
| 18. "Manhattan Morning" | |
| Polymer Tempera on Panel 24 x 28 | |
| BETH DANFELSER | Albuquerque |
| 19. "Landscape Motif #1" | |
| Oil on Panel 28 x 22 | |

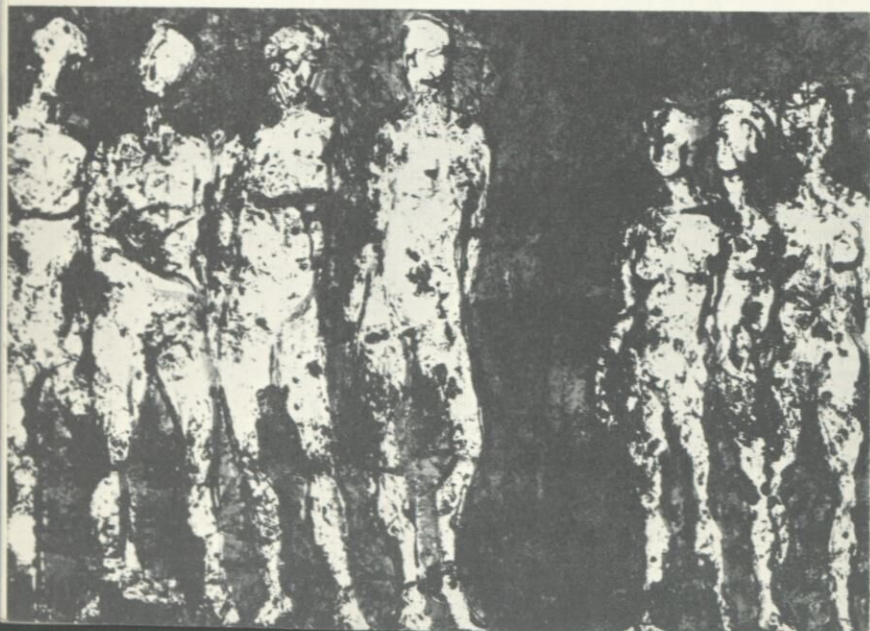


DONNA DUDLEY BROWN
"Little People"

- RANDALL DAVEY
★ 20. "Young Woman at the Races"
Oil on Panel 35 x 27
JURY MEMBER
Santa Fe
- ELEANOR DE GHIZE
21. "Doorway"
Oil on Panel 19 x 13
Santa Fe
- NEIL DI TERESA
★ 22. "Still Life"
Oil on Canvas 38 x 30
Albuquerque
- RALPH DOUGLASS
23. "Her Hands"
Oil on Canvas 14 x 25
Albuquerque
- RAY DREW
24. "Villanueva"
Water Color 18 x 22
Las Vegas
- GUSSIE DU JARDIN
★ 25. "Winter Trees"
Oil on Panel 20 x 24
FIRST PURCHASE PRIZE
Montezuma
- LOYCE EASLEY
★ 26. "Ancient Vintage"
Oil on Canvas 30 x 20
Hobbs

- | | |
|--|-------------|
| FREMONT F. ELLIS | Santa Fe |
| 27. "The Plume Dance, Oaxaca" | |
| Oil on Canvas 30 x 25 | |
| LOUIE EWING | Santa Fe |
| ★ 28. "Landscape #2" | |
| Casein on Panel 18 x 24 | |
| JOSEPH A. FLECK | Taos |
| ★ 29. "Late October" | |
| Oil on Panel 20 x 30 | |
| CONNIE FOX | Sandoval |
| 30. "Turkey Ridge" | |
| Acrylic Polymer Latex on Panel 46 x 48 | |
| JUDITH FRIEDMAN | Pecos |
| ★ 31. "Studio Still Life" | |
| Oil on Canvas 18 x 28 | |
| JANE WYATT FULLERTON | Albuquerque |
| 32. "The Back Wall" | |
| Oil on Panel 16 x 20 | |
| LOUISE GANTHIERS | Taos |
| 33. "Structure" | |
| Oil on Canvas 35 x 35 | |
| JACK GARVER | Albuquerque |
| 34. "Horn" | |
| Oil on Canvas 48 x 47 | |
| ERIC GIBBERD | Taos |
| 35. "The Hot Lands" | |
| Oil on Panel 29 x 40 | |
| JOHN W. GILLELAND | Albuquerque |
| 36. "The Monk" | |
| Wood Sculpture 21 | |
| SYLVIA MOORE GRAHAM | Albuquerque |
| 37. "Forgotten Tomorrow" | |
| Oil on Panel 16 x 20 | |
| ROBERT GRANAT | El Rito |
| ★ 38. "Landscape" | |
| Oil on Panel 19 x 25 | |
| MAE GREEN | Albuquerque |
| ★ 39. "Phoenix" | |
| Oil on Canvas 28 x 44 | |

- | | |
|-----------------------------|-------------|
| LEZ HAAS | Albuquerque |
| ★ 40. "Sandias at Dusk" | |
| Oil on Canvas 28 x 70 | |
| JURY MEMBER | |
| DALE HAMLETT | Albuquerque |
| 41. "Faded Signs" | |
| Oil on Panel 30 x 24 | |
| HELEN W. HANSEN | Santa Fe |
| 42. "Patio - Mallorca" | |
| Tempera on Panel 20 x 25 | |
| MARGARET HERRERA | Albuquerque |
| 43. "Mrs. Herrera, Mother" | |
| Oil on Canvas 32 x 22 | |
| NINA HOLLAND | Albuquerque |
| ★ 44. "Chest of Drawers" | |
| Oil on Canvas 36 x 28 | |
| SECOND PURCHASE PRIZE | |
| THOMAS E. HOLLAND | Albuquerque |
| 45. "Still Life with Limes" | |
| Oil on Panel 7 x 13 | |
| KATE HOLT | Santa Fe |
| ★ 46. "Summer Flowers" | |
| Pastel 18 x 15 | |
| WILLIAM VAUGHAN HOWARD | Albuquerque |
| 47. "Mondo #2" | |
| Oil on Canvas 69 x 48 | |

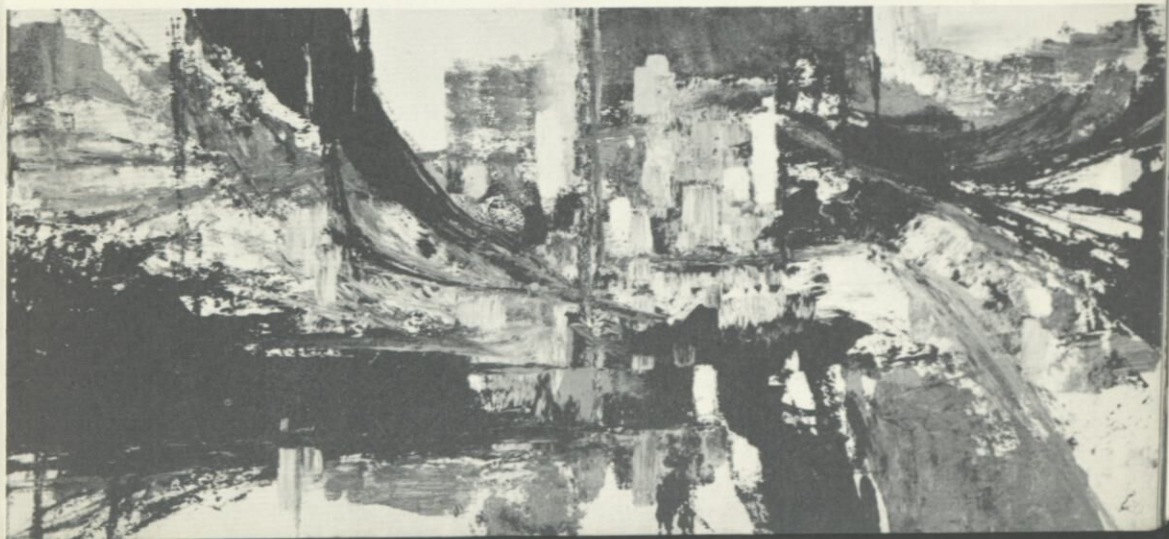


GEORGE KING
"Seven Figures"

FREMONT F. ELLIS
"The Plume Dance, Oaxaca"



AL KIDWELL
"Bight"



ODON HULLENKREMER	Santa Fe
48. "Woman of Chimayo"	
Oil on Panel 24 x 20	
W. GORDON JOHNSON	Los Alamos
49. "Picture at an Exhibition"	
Oil on Panel 16 x 24	
AL KIDWELL	Albuquerque
50. "Bight"	
Oil on Panel 23 x 47	
EDITH B. KING	Los Alamos
51. "Abundance"	
Oil on Panel 30 x 23	
GEORGE KING	Silver City
52. "Seven Figures"	
Oil on Panel 18 x 24	
RUTH N. LAGRAVE	Albuquerque
53. "Peace"	
Oil on Panel 15 x 24	
RUTH LAMBERT	Santa Fe
54. "Fanfare"	
Mobile 32	
KARL LARSSON	Santa Fe
★ 55. "Evening, Sweden"	
Water Color 12 x 19	
CLAIRE LATOUR	Santa Fe
56. "Santa Fe Landscape"	
Water Color 20 x 15	
RALPH LEWIS	Albuquerque
57. "Canyon"	
Oil on Panel 47 x 23	
LOIS LINDER	Santa Fe
58. "Hondo Valley"	
Water Color 14 x 22	
JANET LIPPINCOTT	Santa Fe
59. "Three of Us"	
Oil on Canvas 30 x 49	
THOMAS S. MACAIONE	Santa Fe
60. "When Winter is Around the Corner"	
Egg-based Oil on Panel 33 x 45	

KENNETH M. ADAMS
"White Zinnias"
AWARD OF MERIT



KENNETH R. BARRICK
"Crowd"
JURY MEMBER





NEIL DI TERESA
"Still Life"

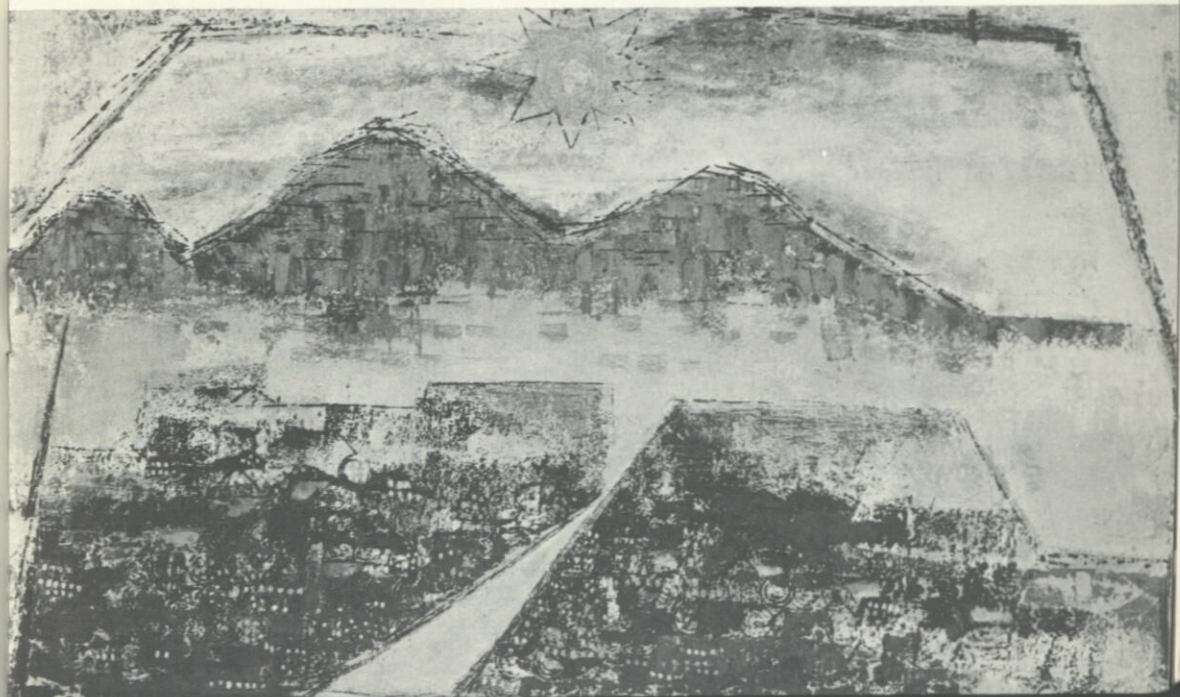
- | | |
|---|-------------|
| MILLCENT MATHEWS
61. "Spring Debutantes"
Oil on Panel 24 x 18 | Albuquerque |
| DONALD K. McALAVY
62. "The Old Place"
Oil on Panel 14 x 18 | Clovis |
| G. JOSEPH MOODY
63. "El Rancho"
Oil on Panel 16 x 28 | Los Alamos |
| KAY MOTT
64. "La Calle de la Losa"
Oil on Panel 31 x 24 | Santa Fe |
| SIGNE M. NELSON
65. "Mestizo"
Oil on Canvas 36 x 36 | Albuquerque |
| LIA NICKSON
66. "Insect"
Metal Sculpture 9 | Portales |

- | | |
|----------------------------------|-------------|
| HAL OLSEN | Los Alamos |
| ★ 67. "Bridges Southwest" | |
| Oil on Canvas 37 x 70 | |
| CURTIS OTTO | Taos |
| 68. "Old Homestead" | |
| Oil on Canvas 18 x 22 | |
| CARL E. PAAK | Albuquerque |
| 69. "Turtle" | |
| Ceramic Sculpture 6 | |
| MARGE PAGE | Carlsbad |
| 70. "Etalage" | |
| Oil on Panel 24 x 30 | |
| RICHARD PERRAULT | Sandoval |
| 71. "Nature Study #2" | |
| Oil on Panel 24 x 31 | |
| DOEL REED | Taos |
| 72. "Neighborhood Observers" | |
| Oil on Canvas 28 x 36 | |
| LOUIS RIBAK | Taos |
| 73. "Landscape" | |
| Oil on Panel 30 x 48 | |
| DOLONA ROBERTS | Santa Fe |
| 74. "Vertigo" | |
| Oil on Canvas 49 x 36 | |
| OLIVE RUSH | Santa Fe |
| 75. "Forest Storm" | |
| Water Color and Tempera 24 x 18 | |
| K. V. M. SADOCK | Albuquerque |
| 76. "Outside Caudy, Ceylon" | |
| Water Color 13 x 19 | |
| HOWARD B. SCHLEETER | Santa Fe |
| 77. "Lunar Textures" | |
| Polymer and Oil on Panel 21 x 28 | |
| ELMER SCHOOLEY | Las Vegas |
| ★ 78. "Winter Fields" | |
| Oil on Canvas 19 x 44 | |
| AWARD OF MERIT | |
| KELLY SHANNON | Santa Fe |
| 79. "Artist in Red Shirt" | |
| Oil on Panel 48 x 25 | |

- | | |
|---|-------------|
| ROBERT SHOTOLA | Albuquerque |
| 80. "Organic Variation IV"
Oil on Canvas 36 x 26 | |
| AGNES SIMS | Santa Fe |
| 81. "Antelope Dancers"
Fresco on Panel 25 x 30 | |
| PATRICIA SMITH | Alameda |
| 82. "Nude Study"
Granite and Resin Sculpture 14 | |
| SAM SMITH | Albuquerque |
| ★ 83. "Buffalo Dance"
Water Color 21 x 30 | |
| ELIZABETH STARK | Los Alamos |
| ★ 84. "Girl with Flowers"
Casein on Panel 19 x 12 | |
| DORIS STEIDER | Albuquerque |
| ★ 85. "Weathering"
Oil on Canvas 30 x 22
AWARD OF MERIT | |
| JACK STOLLER | Albuquerque |
| 86. "Boy with Drums"
Oil on Canvas 36 x 35 | |
| CHUZO TAMOTZU | Santa Fe |
| 87. "Squirrel and Self Portrait"
Oil on Canvas 36 x 24 | |
| CHARLES THWAITES | Taos |
| 88. "No. 49"
Mixed Media on Panel 25 x 36 | |
| JOHN TOWNSEND | Portales |
| ★ 89. "Painting"
Oil on Canvas 54 x 36 | |
| 90. "Seated Woman"
Cast Plaster Sculpture 15 | |
| KATHERINE B. UHLFELDER | Albuquerque |
| ★ 91. "Fantasy"
Tempera and Ink 22 x 16 | |
| ANN UPSON | Albuquerque |
| 92. "The Old Orchard"
Water Color 14 x 21 | |
| LUELLE UPTON | Albuquerque |
| 93. "The Fascination of Comics"
Oil on Canvas 24 x 20 | |

- | | |
|--------------------------------|-------------|
| GEORGE VLAHOS | Albuquerque |
| 94. "Dakota I" | |
| Oil on Canvas 16 x 24 | |
| VALYNE G. WALTER | Albuquerque |
| 95. "Sandia View" | |
| Oil on Panel 16 x 20 | |
| JAN WEBER | Albuquerque |
| 96. "Spring Flowers" | |
| Oil on Panel 20 x 16 | |
| HAROLD E. WEST | Santa Fe |
| 97. "In Sight of Turnpike" | |
| Oil on Canvas 20 x 24 | |
| ELZEAR WILKIN WHITE | Albuquerque |
| 98. "Landscape with Motels" | |
| Tempera 17 x 19 | |
| BILL WIGGINS | Roswell |
| 99. "Plains No. 4" | |
| Oil on Panel 27 x 27 | |
| ETNA WISWALL | Santa Fe |
| ★100. "Village Street, Mexico" | |
| Water Color 12 x 17 | |
| WEBB YOUNG | Santa Fe |
| 101. "Puerta Azul" | |
| Oil on Panel 27 x 21 | |

MAE GREEN
"Phoenix"





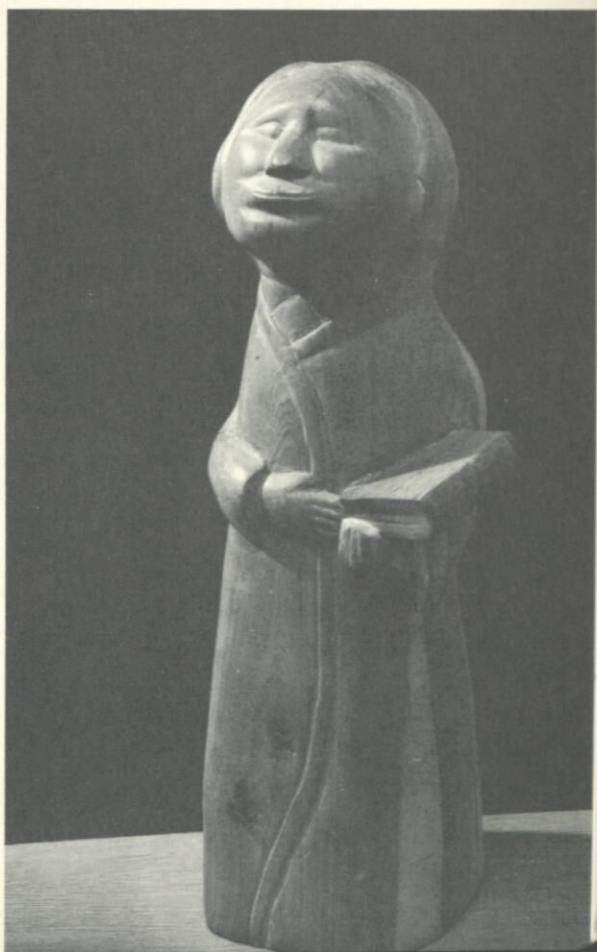
LOYCE EASLEY
"Ancient Vintage"

HAL OLSEN
"Bridges Southwest"





HOWARD B. SCHLEETER
"Lunar Textures"



JOHN W. GILLELAND
"The Monk"

Geographical Index

ALAMEDA

Donna Dudley Brown
Patricia Smith

ALBUQUERQUE

Kenneth N. Adams
Jean Armstead
Dean Aydelott
Stanton Benjamin
Evelyn G. Byatt
William F. Conger
Arita Courville
Beth Danfelter
Neil Di Teresa
Ralph Douglass
Jane Wyatt Fullerton
Jack Garver
John W. Gilleland
Sylvia Moore Graham
Mae Green
Lez Haas
Dale Hamlett
Margaret Herrera
Nina Holland
Thomas E. Holland, Jr.
William Vaughan Howard
Al Kidwell
Ruth N. LaGrave
Ralph Lewis
Millicent Mathews
Signe M. Nelson
Carl E. Paak
K. V. M. Sadock
Robert Shotola
Sam Smith
Doris Steider
Jack Stoller
Katherine B. Uhlfelder
Ann Upson
Louella Upton
George Vlahos
Valyne G. Walter
Jan Weber
Elzear Wilkin White

CARLSBAD

Marge Page

CLOVIS

Donald McAlavy

EL RITO

Robert Granat

HOBBS

Lola Courtney
Loyce Easley

LAS CRUCES

Kenneth R. Barrick

LAS VEGAS

Ray Drew
Elmer Schooley

LOS ALAMOS

W. Gordon Johnson
Edith B. King
G. Joseph Moody
Hal Olsen
Elizabeth Stark

MONTEZUMA

Gussie Dujardin

PECOS

Judith Friedman

PORTALES

Lia Nickson
John Townsend

ROSWELL

Bill Wiggins

SANDOVAL

Connie Fox
Richard Perrault

SANTA FE

Jozef Bakos
Teresa Bakos
David K. Carnahan
Barbara Beaudreau Carter
Philip Cooke
Randall Davey
Fremont F. Ellis
Louie Ewing
Eleanor de Ghize
Helen W. Hansen
Kate Holt
Odon Hullenkremer
Ruth Lambert
Karl Larsson
Claire Latour
Lois Linder
Janet Lippincott
Thomas S. Macaione
Kay Mott
Dolona Roberts
Olive Rush
Howard B. Schleeter
Kelly Shannon
Agnes Sims
Chuzo Tamotzu
Harold E. West
Etna Wiswall
Webb Young

SILVER CITY

George King

TAOS

Rita Deanin Abbey
Emil Bisttram
Howard Cook
Joseph A. Fleck
Louise Ganthiers
Eric Gibberd
Curtis Otto
Doel Reed
Louis Ribak
Charles Thwaites

