

Illustrated Checklist Sorted by Artist

Gustave Baumann
gouache paintings (visual works): Frijoles Canyon (study), 1918
tempera on paper
Image: 12 1/8 x 19 in. (30.8 x 48.3 cm)
Support: 12 5/8 x 20 1/4 in. (32.1 x 51.4 cm)
Mat: 20 x 30 in. (50.8 x 76.2 cm)
Gift of Jane Baumann, 1979
4507.23P



Mountain landscape with houses at base of mountain,
trees and grasses throughout image, canyon to L of
image. Old ruins in a circle.

Donald Beauregard
Clouds, 1913
Oil on panel
Image: 5 1/4 x 7 in. (13.3 x 17.8 cm)
Frame: 12 1/4 x 13 1/2 x 2 in. (31.1 x 34.3 x 5.1 cm)
Gift of the Honorable Frank Springer, 1917
332.23P



Image of swirling clouds in blues, whites and pink.

Donald Beauregard
Evening in the Pueblo, circa 1910
oil on canvas
28 1/2 x 39 in. (72.4 x 99.1 cm)
Gift of the Honorable Frank Springer, 1925
397.23P

Night scene with Native Americans sitting in center of
pueblo, buildings in background, dark blue sky.



Donald Beauregard
paintings (visual works): Utah Landscape, circa 1910
oil on canvas
Image: 31 1/8 x 38 1/8 in. (79.1 x 96.8 cm)
Frame: 41 3/4 x 48 7/8 x 3 in. (106 x 124.1 x 7.6 cm)
Gift of the Honorable Frank Springer, 1925
538.23P

Brightly colored, small sage bushes dot the central
foreground. The bushes form a path that appears to end
at the edge of a drop-off. A group of trees fill the right side
of the image. In the background the sun appears to be
setting or rising by the pale glow of the pinkish white sky
and the shadows that cover the canopy of a grove of
trees at center.



Donald Beauregard
Untitled (Douamenez), circa 1912
oil on canvas
Image: 19 x 23 1/2 in. (48.3 x 59.7 cm)
Frame: 27 7/8 x 32 1/2 x 1 3/4 in. (70.8 x 82.6 x 4.4 cm)
Gift of the Honorable Frank Springer, 1925
992.23P

Two (2) women walking on the street next to a fence and
house, houses in the background.



Illustrated Checklist Sorted by Artist

Donald Beauregard
Jardin du Luxembourg, circa 1912

Oil on canvas

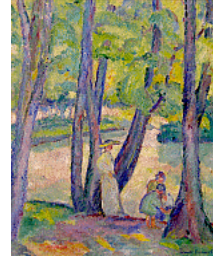
Image: 23 1/2 x 19 1/4 in. (59.7 x 48.9 cm)

Frame: 32 x 27 1/2 x 1 in. (81.3 x 69.9 x 2.5 cm)

Gift of the Honorable Frank Springer, 1925

993.23P

Three figures; two women and a boy in garden, trees, grass and flowers.



Donald Beauregard
Trees on Hillside, circa 1912

Oil on canvas

Image: 19 1/2 x 23 5/8 in. (49.5 x 60 cm)

Frame: 27 1/2 x 31 3/8 x 2 1/4 in. (69.9 x 79.7 x 5.7 cm)

Gift of the Honorable Frank Springer, 1925

995.23P

Trees in foreground with four figures, figure in yellow on tree, white building and blue sky.



Donald Beauregard
oil paintings (visual works): Portrait of the Artist, circa 1910

oil on canvas

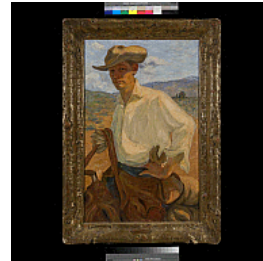
Image: 31 3/8 x 19 9/16 in. (79.7 x 49.7 cm)

Frame: 38 3/4 x 26 7/8 x 2 1/2 in. (98.4 x 68.3 x 6.4 cm)

Gift of the Honorable Frank Springer, 1925

1002.23P

Portrait of artist riding a horse holding reins in his proper right hand, wearing blue jeans and chaps, yellow shirt, cowboy hat, landscape in background, blue, cloudy skies.



Donald Beauregard
oil paintings (visual works): Portrait of an Artist, circa 1912

oil on canvas

Image: 69 x 45 in. (175.3 x 114.3 cm)

Gift of the Honorable Frank Springer, 1925

1003.23P

Full portrait of a young man wearing a brown jacket and vest, white shirt with black tie, green nickerpockers, brown shoes holding a cane and hat in right hand, coat over left arm. Houses and buildings in background, blue skies.



Donald Beauregard
Untitled (Leysin), 1913

oil on canvas

Image: 19 x 23 1/2 in. (48.3 x 59.7 cm)

Frame: 28 x 32 1/2 x 1 3/4 in. (71.1 x 82.6 x 4.4 cm)

Gift of the Honorable Frank Springer, 1925

1011.23P

Church surrounded by houses, green valley, mountains in background with snow caps, blue skies white cloud to left of image.



Illustrated Checklist Sorted by Artist

Donald Beauregard
Lone Tree, circa 1912

Oil on canvas

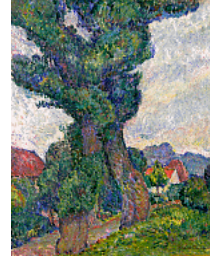
Image: 23 1/2 x 19 in. (59.7 x 48.3 cm)

Frame: 31 5/8 x 27 1/4 x 2 3/4 in. (80.3 x 69.2 x 7 cm)

Gift of the Honorable Frank Springer, 1925

1016.23P

Tree in foreground, buildings in background, mountain, blue skies.



Donald Beauregard
David Before Saul, circa 1913

Oil on canvas

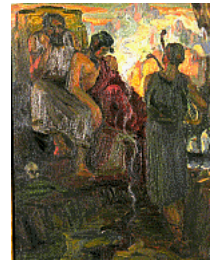
Image: 16 x 13 in. (40.6 x 33 cm)

Frame: 21 1/2 x 18 1/2 x 2 in. (54.6 x 47 x 5.1 cm)

Gift of the Honorable Frank Springer, 1925

1018.23P

Young man standing in front of two seated figures, skull in foreground at left of image, dark colors.



Donald Beauregard
Peasant Market Scene (front); Fishing Boats (reverse), circa 1912

Oil on canvas

Image: 27 7/8 x 34 3/4 in. (70.8 x 88.3 cm)

Frame: 41 1/4 x 47 7/8 x 3 in. (104.8 x 121.6 x 7.6 cm)

Gift of the Honorable Frank Springer, 1925

1019.23P

Five figures gathered around horse and cart, one figure stands on cart, buildings in background with figure and market scene, blue skies.



Donald Beauregard
Rue Royale, Paris, circa 1910

oil on canvas

Image: 23 1/2 x 18 7/8 in. (59.7 x 47.9 cm)

Frame: 32 1/2 x 28 x 1 3/4 in. (82.6 x 71.1 x 4.4 cm)

Gift of the Honorable Frank Springer, 1925

1020.23P

Street scene. Cafe, buildings in background, tree in foreground, blue sky.



Donald Beauregard
In a French Cafe, circa 1912

oil on canvas

Image: 19 1/4 x 23 3/8 in. (48.9 x 59.4 cm)

Frame: 27 1/2 x 31 3/4 x 2 1/8 in. (69.9 x 80.6 x 5.4 cm)

Gift of the Honorable Frank Springer, 1925

1024.23P

Man wearing dark suit, white shirt and dark tie, holding a cigar in proper right hand, paintings in background.



Illustrated Checklist Sorted by Artist

Donald Beauregard
Cincinnatus, circa 1913

oil on canvas

13 x 16 in. 13 x 16 in.

Museum purchase with funds raised by the School of
American Research, 1952

1027.23P

Four figures with ox and plow, blue skies.



Donald Beauregard
Samson, circa 1913

Oil on canvas

Image: 13 x 16 in. (33 x 40.6 cm)

Frame: 18 1/2 x 21 1/2 x 2 in. (47 x 54.6 x 5.1 cm)

Gift of the Honorable Frank Springer, 1925

1028.23P

Male figure with pole attempting to lift large boulder at
right of image, figures in foreground and background.



Donald Beauregard
Lazarus, circa 1913

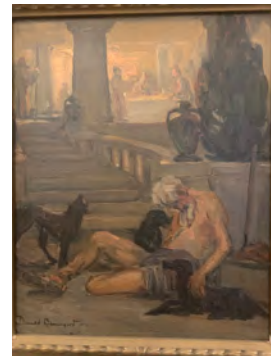
oil on canvas

13 x 16 in. 13 x 16 in.

Museum purchase with funds raised by the School of
American Research, 1952

1029.23P

Male (Lazarus) leaning against stone wall wears loin cloth
and sandals. Two dogs next to him. Supper scene in
background.



Donald Beauregard
Peasant Girl, circa 1912

Oil on canvas

Image: 15 3/4 x 12 1/2 in. (40 x 31.8 cm)

Frame: 22 1/2 x 19 1/2 x 2 in. (57.2 x 49.5 x 5.1 cm)

Gift of the Honorable Frank Springer, 1925

1033.23P

Head and should protrait of yound woman wearing a
black dress with white smock, white peasant cap, brown
background.



Donald Beauregard
Untitled (Pan), circa 1913

Oil on canvas

Image: 15 3/8 x 23 3/8 in. (39.1 x 59.4 cm)

Frame: 25 x 33 x 2 7/8 in. (63.5 x 83.8 x 7.3 cm)

Gift of the Honorable Frank Springer, 1925

1034.23P

Two mythical figures; half man half goat in forest, one
figure playing the flute other figure leaning against tree.



Illustrated Checklist Sorted by Artist

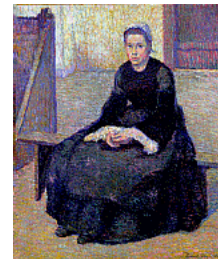
Donald Beaugard
Harbor Houses, circa 1912
oil on canvas
19-1/2 x 24 in. 19-1/2 x 24 in.
Gift of the Honorable Frank Springer, 1925
1035.23P
Three boats in foreground, river houses in background,
blue sky.



Donald Beaugard
Centaur Carrying Off Dryad, circa 1913
oil on canvas
Overall: 13 x 16 x 2 in. (33 x 40.6 x 5.1 cm) 13 x 16 in.
Gift of the Honorable Frank Springer, 1925
1036.23P
Centaur; half man half horse holding nude woman on left
side, Centaur has a dagger in his chest, trees in
background.



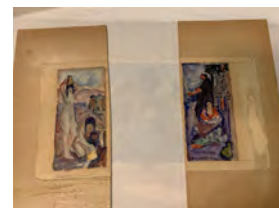
Donald Beaugard
Breton Peasant Woman, circa 1912
Oil on canvas
Image: 23 3/8 x 19 in. (59.4 x 48.3 cm)
Frame: 31 1/2 x 27 1/8 x 2 1/2 in. (80 x 68.9 x 6.4 cm)
Gift of the Honorable Frank Springer, 1925
1037.23P
Peasant woman sitting on bench, wearing a black dress
and apron; white bonnet, white background, window on
wall.



Donald Beaugard
Corner of the Studio, circa 1912 - 1913
oil on canvas
Image: 45 1/2 x 34 3/8 in. (115.6 x 87.3 cm)
Frame: 55 1/4 x 44 3/8 x 2 1/4 in. (140.3 x 112.7 x 5.7 cm)
Gift of the Honorable Frank Springer, 1925
1038.23P
Still life, flowers in vase on round table, blue background,
teapot to left of image top; woman sits behind tea pot.



Donald Beaugard
Indian Attack (Proposed Mural Design, Utah Building,
Panama-California Exposition, San Diego), 1913
watercolor on paper
5 3/4 x 23 in. (14.6 x 58.4 cm)
Gift of the Honorable Frank Springer, 1925
1114ABC.23P
Left image: 2 nude Native Americans carrying water jugs
on head.Center Scene: War scene, Native American and
horses carrying weapons. Right Scene: A monk and
Native American woman kneeling.



Illustrated Checklist Sorted by Artist

Donald Beauregard

Untitled, 1912

Oil on canvas

Image: 13 x 15 1/2 in. (33 x 39.4 cm)

Frame: 16 1/2 x 19 1/4 x 2 in. (41.9 x 48.9 x 5.1 cm)

Gift of the Honorable Frank Springer, 1925

1127.23P

Cafe scene. Family of four sitting at table with glasses in hand, figures in background with trees.



Donald Beauregard

Untitled, circa 1912

Oil on canvas

Image: 19 5/8 x 23 3/4 in. (49.8 x 60.3 cm)

Frame: 39 x 29 1/4 x 2 1/2 in. (99.1 x 74.3 x 6.4 cm)

Gift of the Honorable Frank Springer, 1925

1128.23P

Still life, three (3) oranges, three (3) apples one wrapped in a white napkin; one (1) banana, green water pitcher, blue table cloth.



Donald Beauregard

Untitled, circa 1912

Oil on canvas

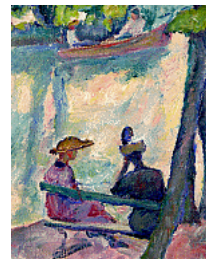
Image: 16 x 12 1/2 in. (40.6 x 31.8 cm)

Frame: 20 3/4 x 17 1/2 x 2 in. (52.7 x 44.5 x 5.1 cm)

Gift of the Honorable Frank Springer, 1925

1129.23P

Couple sitting on a bench looking at couple in a canoe, trees in foreground.



Donald Beauregard

watercolor paintings: Sketch for mural "The Conversion of St. Francis", 1913

watercolor on illustration board

Image: 19 1/2 x 11 1/2 in. (49.5 x 29.2 cm)

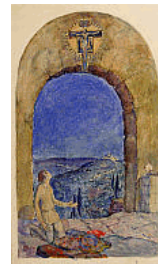
Support: 21 x 15 1/4 in. (53.3 x 38.7 cm)

Mat: 25 x 17 1/2 in. (63.5 x 44.5 cm)

Gift of the Honorable Frank Springer, 1925

1146.23P

A young Francis kneels in front of an open portal looking up at a crucifix with arms outstretched. In the distance is Assisi and the Umbrian country side.



Donald Beauregard

watercolor paintings: Sketch for mural "The Renunciation of Santa Clara", 1913

watercolor on illustration board

Support: 15 x 20 in. (38.1 x 50.8 cm)

Gift of the Honorable Frank Springer, 1925

1149.23P

St. Clair is depicted in the center panel in a white shift with her clothes at her feet; in the left panel are pilgrims on foot and a man on a white horse; in the right panel St. Francis is kneeling while attending to a lame man; the tops of the panels are cut off.



Illustrated Checklist Sorted by Artist

Donald Beauregard
watercolor paintings: Sketch for mural "Christopher Columbus",
1913
watercolor on illustration board
Image: 16 x 8 in. (40.6 x 20.3 cm)
Support: 20 1/8 x 14 7/8 in. (51.1 x 37.8 cm)
Gift of the Honorable Frank Springer, 1925
1150.23P

Christopher Columbus and his son Diego receive hospitality from a Franciscan Monk; the boy receives a loaf of bread while Columbus stands behind him; in the background are Columbus's sailing ships.



Donald Beauregard
watercolor paintings (visual works): Sketch for mural
"Preaching to the Mayas & Aztecs", 1913
watercolor on illustration board
Image: 14 3/16 x 19 in. (36 x 48.3 cm)
Support: 14 11/16 x 19 13/16 in. (37.3 x 50.3 cm)
Mat: 22 x 28 in. (55.9 x 71.1 cm)
Gift of the Honorable Frank Springer, 1925
1155.23P

This hypothetical event depicts a Franciscan holding up a crucifix to a group of Mayans with temples from Palenque and Chichen Itza in the background. Flanking the Franciscan are armed Spanish soldiers on horses.



Donald Beauregard
watercolor paintings: Sketch for mural "The Apotheosis of St.
Francis", 1913
watercolor on illustration board
Support: 15 1/16 x 20 3/8 in. (38.3 x 51.8 cm)
Gift of the Honorable Frank Springer, 1925
1156.23P

St. Francis is in the center, kneeling before a spring and holding a golden chalice. Surrounding him are personifications from left to right; Art, Theology, Religion, Literature, Philosophy and Society.



Donald Beauregard
watercolor paintings: Sketch for mural "Building the New
Mexico Missions", 1913
watercolor on illustration board
Image: 17 x 10 in. (43.2 x 25.4 cm)
Mat: 12 1/4 x 17 1/2 in. (31.1 x 44.5 cm)
Gift of the Honorable Frank Springer, 1925
1157.23P

Two Franciscan monks stand looking at a building plan in their hands; another monk is to the side hammering stones; a partially constructed building and scaffolding are in the background; another group of people are slightly visible through the archway.



Illustrated Checklist Sorted by Artist

Donald Beauregard
Untitled (Proposed Design for Reception Room, Utah Building,
Panama-California Exposition, San Diego), 1913
watercolor on wove paper
12-1/2 x 12-3/4 in. 12-1/2 x 12-3/4 in.
Gift of the Hon. Frank Springer
1167D.23P

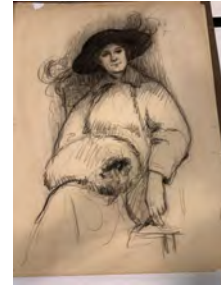


Illustrated Checklist Sorted by Artist

Donald Beauregard
Untitled (Proposed Seal Design for Reception Room, Utah
Building, Panama-California Exposition, San Diego), 1913
watercolor on wove paper
12 3/4 x 12 3/4 in. (32.4 x 32.4 cm)
Gift of the Hon. Frank Springer
1167F.23P



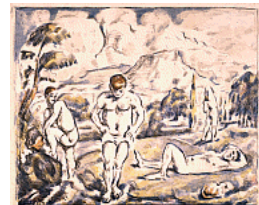
Donald Beauregard
7 Drawings, n.d.
chalk, charcoal, watercolor
various dimensions
Gift of the Hon. Frank Springer
1169C.23D
3 women's heads; 1 woman full-length, clothed; 1 woman
clothed including hat and muff; 1 full-length seated female
figure, lowerhalf draped; 1 seated male nude, side view.



Donald Beauregard
Untitled, n.d.
chalk, charcoal on brown wove paper
16-3/4 x 11 in.
Gift of the Hon. Frank Springer
1174.23D



Paul Cezanne
Les Baigneurs, 1896-1898
lithograph on laid paper
image: 16 1/4 x 20 in. (41.3 x 50.8 cm)
support: 24 1/8 x 30 x 1 in. (61.3 x 76.2 x 2.5 cm)
mat: 28 x 22 in. (71.1 x 55.9 cm)
Bequest of Vivian Sloan Fiske, 1978
4184.23G



Four nude figures in a pastoral scene. Two figures
standing with one facing the viewer, hands on hips &
head bent foreword. The second figure stands with one
foot lifted and is leaning on a rock along a stream.
Another figure at far right of image is lying on the ground
with leg bent and arm stretched behind their head. A
fourth figure is standing in the background with their back
to the viewer. In the distance are trees and a mountain.
